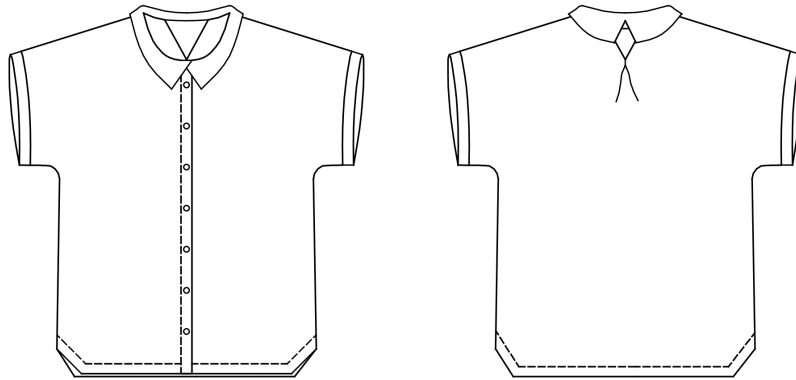


Parisette - The City Shirt

sew along



design



Parisette is a straight shirt to wear for a city and Parisian look.

The collar is assembled without a collarband.

The short sleeves without armhole are hemmed with a narrow hem.

The top of the back has a triangular yoke finished with an outward fold.

The bottom of the back is slightly longer than the front and the side of the hem is shaped in a triangle.



size chart

	1	2	3	4	5	6	7
stature	1.68m	1.68m	1.68m	1.68m	1.68m	1.68m	1.68m
bust	83cm	87cm	91cm	95cm	100cm	105cm	111cm
full hips	90cm	94cm	98cm	102cm	107cm	112cm	118cm
upper arm width	26cm	27cm	28cm	29cm	30.2cm	31.5cm	33cm

* Measure the bust at breast level and parallel to the ground.

* Measure the waist where the rib cage is hollow, on top of the navel.

* Measure the full hips at the height of the buttocks.

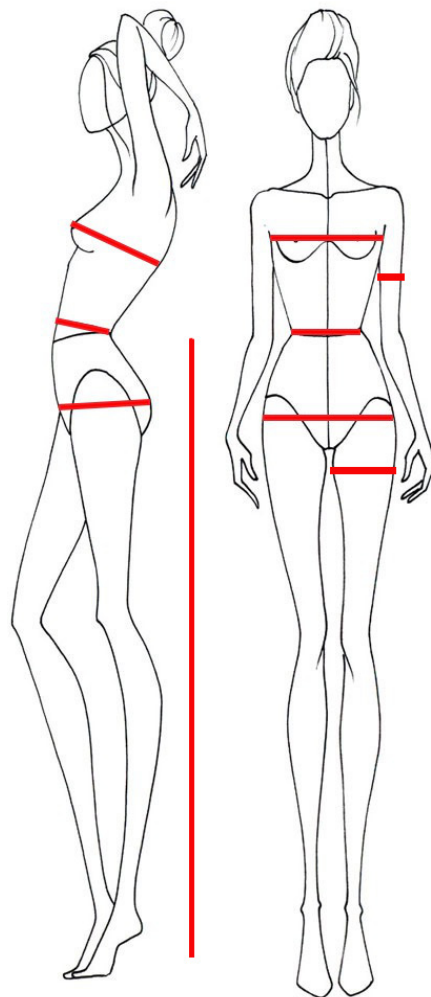
* Measure the back from one armpit to the other.

* Measure the arm width at the height of the upper arm.

* Measure the arm length from the shoulder joint to the wrist.

* Measure the legs from the waist down to the floor.

* Measure the thigh circumference 10cm underneath the crotch.





supplies

The shoulders being drooping, it is better to choose a soft fabric for this project such as: thin viscose cloth, thin polyester cloth, thin twill, crepe, etc.

It will be necessary to apply fusible interfacing to the collar to strengthen it; even more if the fabric is soft. Choose a thin interfacing.

Do not forget to also get 7 nice buttons matching with your fabric.

	1	2	3	4	5	6	7
Fabric if width 1.40m	1.10m	1.10m	1.10m	1.50m	1.50m	1.50m	1.50m
Fabric if width 1.10m	1.60m	1.60m	1.60m	1.80m	1.80m	1.80m	1.80m
thin interfacing	15cm x 50 cm	15cm x 50 cm	15cm x 50 cm	15cm x 50 cm	15cm x 50 cm	15cm x 50 cm	15cm x 50 cm
10mm diamètre button	7	7	7	7	7	7	7
thread	*	*	*	*	*	*	*

caption & abbreviation

rght/rght : right sides together

rght/wrg : right side on wrong side

wrg/wrg : wrong sides together

RIGHT SIDE OF THE FABRIC

WRONG SIDE OF THE FABRIC



cutting layouts

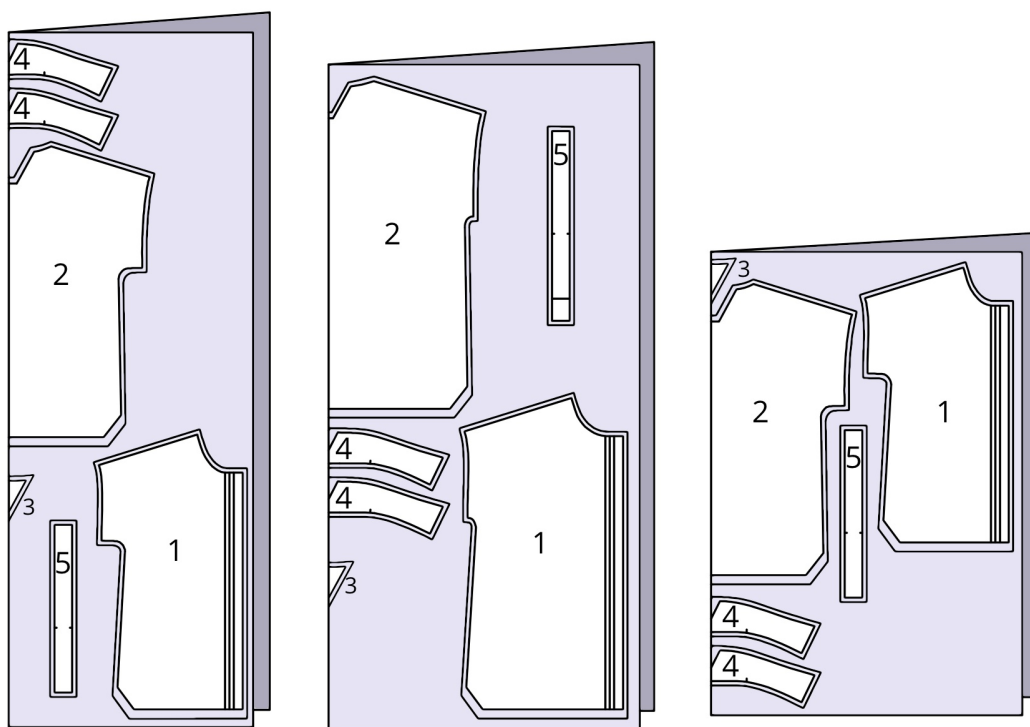
Advice: wash your fabric before cutting it to prevent it from shrinking once put together and washed for the first time. To do so, topstitch the edges of the cut fabric and put it in your washing machine set to the program adapted to the type of fabric. Once sewn, use the same washing program.

Seam allowances are not included in the pattern. For this model, add 3cm for the hem and 1cm everywhere else.

FABRIC

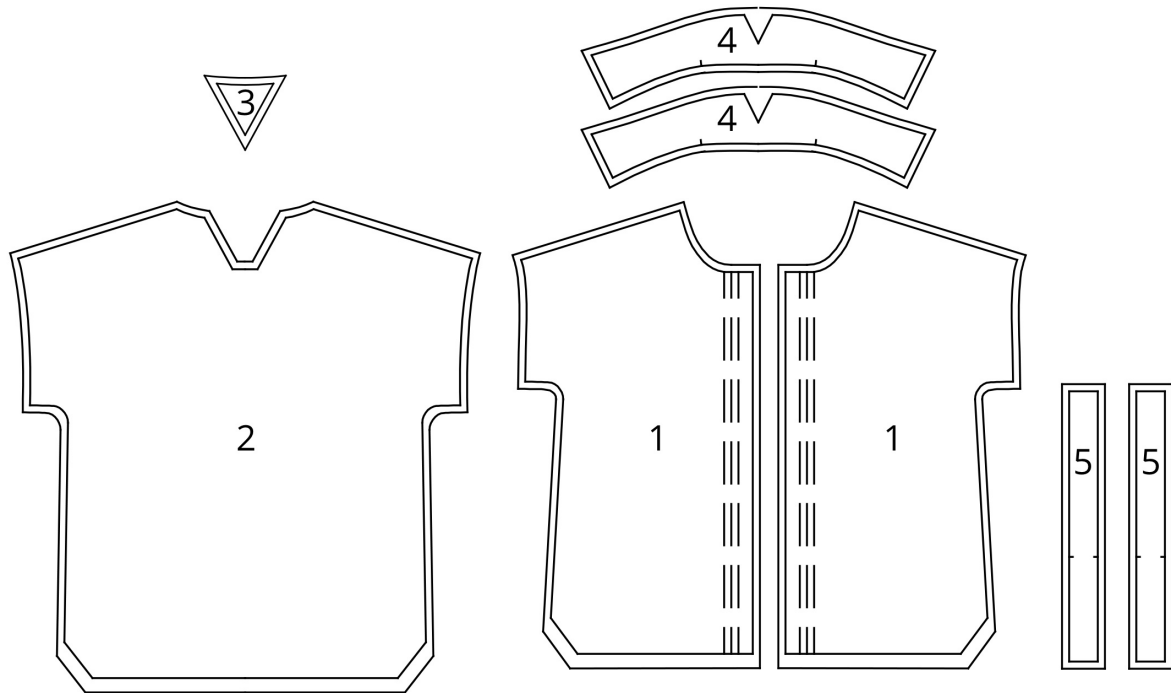
1. Front: cut 2
2. Back: cut 1 on fold
3. Back yoke: cut 1 on fold
4. Collar: cut 2 on fold
5. Sleeve lapel: cut 2

Pattern according to width and size:





inventory

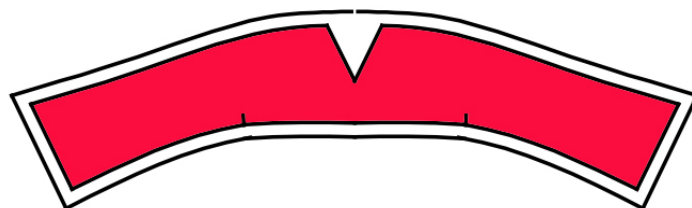


clean-finish edges

For this model, the edges will be clean-finished while stitching the different pieces together.

entoilage

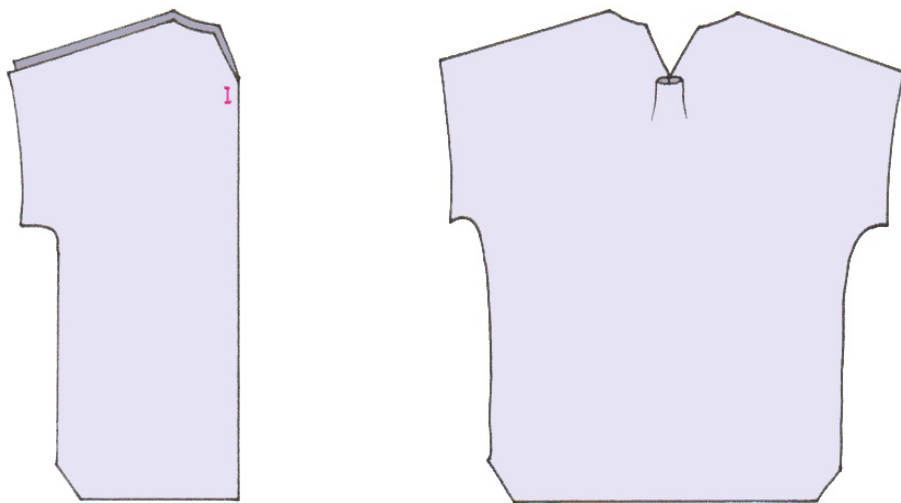
Apply thin fusible interfacing to one collar.



pas à pas de montage

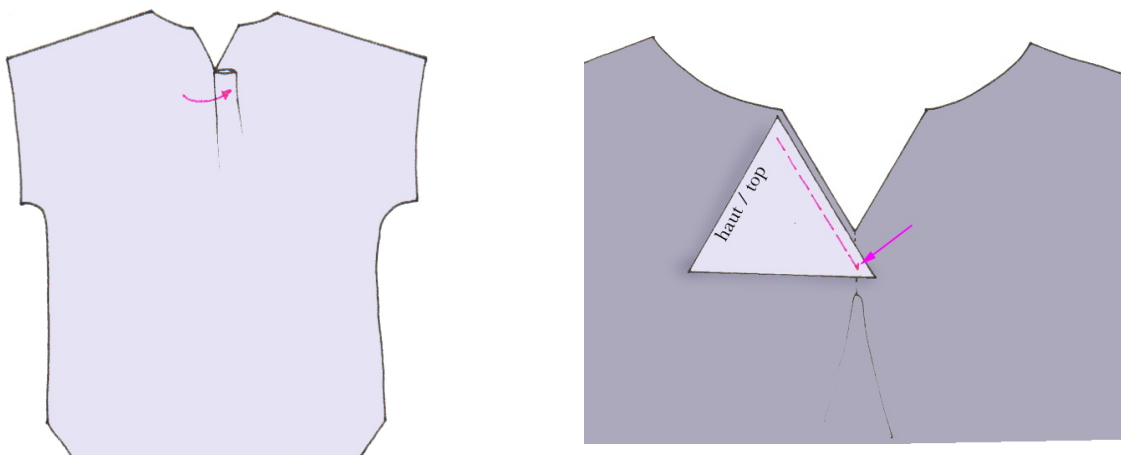
1. THE INVERTED PLEAT

- Fold the back in the middle right/right. Stitch on the marked line. Careful, this seam must not encroach upon the seam allowance and must measure 1 cm.
- Open the pleat and press it.



2. THE BACK YOKE

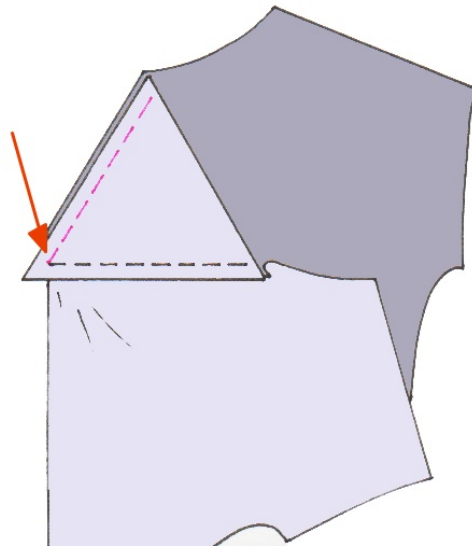
- Temporarily, fold the inverted pleat down on one side to assemble the triangular yoke without taking it in the seam.
- Stitch the triangular yoke with the back right/right. The triangle peak must exactly match with the back middle (the inverted pleat's seam).
- Stitch the triangle side stopping exactly at the peak.





- Do the same with the other side of the triangle without forgetting to clear the pleat. (If the seam of the inverted pleat stops at the allowance seam, then the back is easy to place without being clipped).

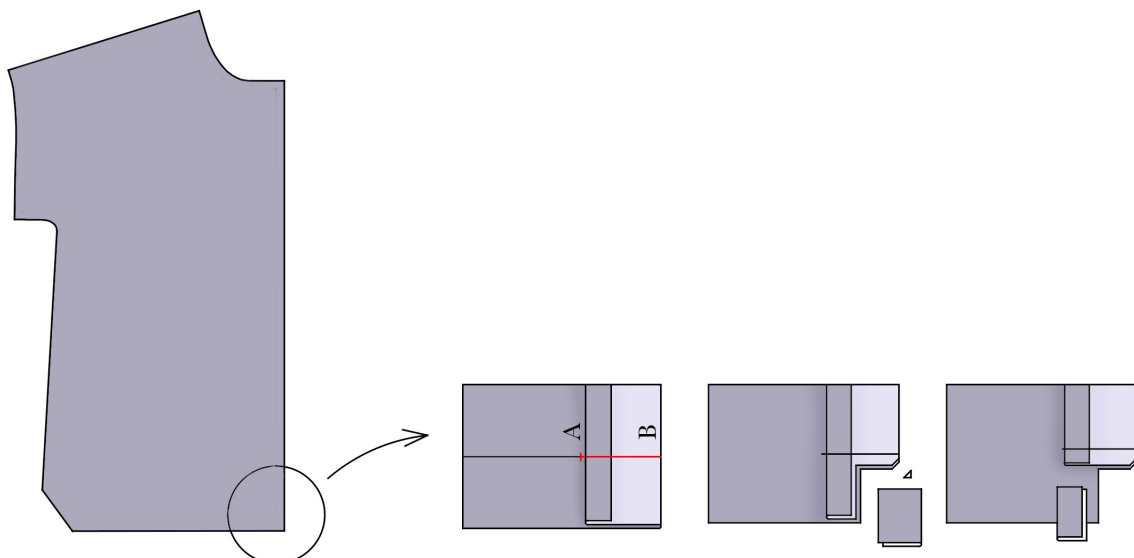
- Stitch the other side of the triangle exactly from the peak.
- Topstitch the seam allowances of the triangle and the back together. Press the allowance towards the bottom



3. THE BUTTON STRIP

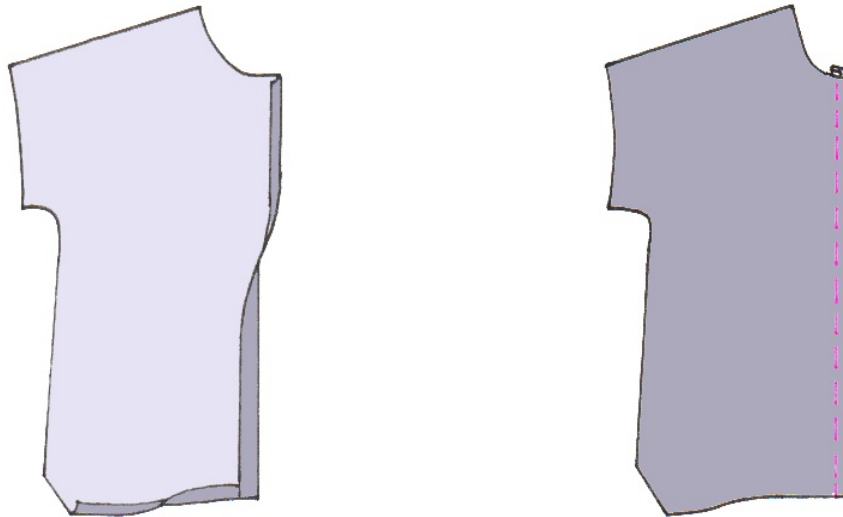
Do an angle hem at the bottom of the button strips:

- Over few centimetres, fold the seam allowance (marking line "A") wrg/wrg.
- Fold the button strip (marking line "B") right/right.
- Stitch these folds on the hem line.
- Clip in three steps: cut out a rectangle then a small triangle.
- Clip again by removing the remaining seam allowance strip.



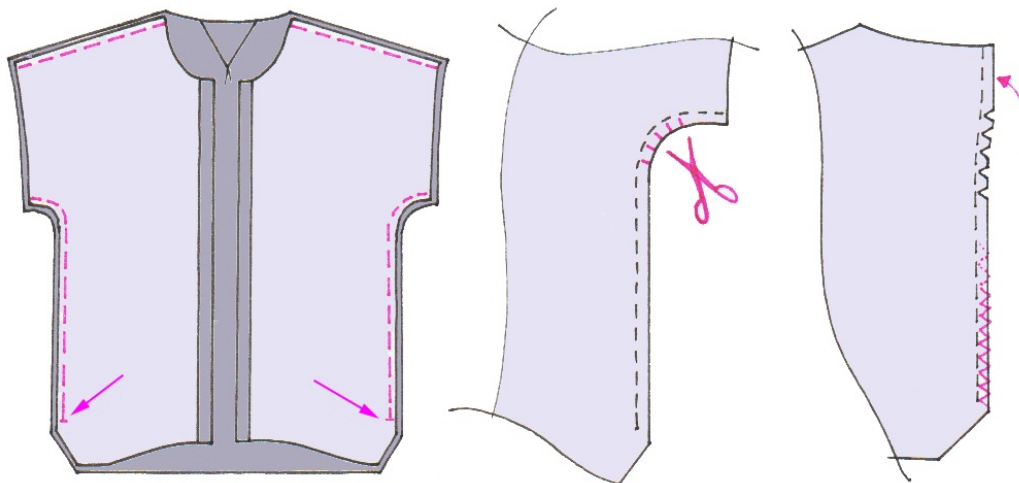


- Turn the angles on the right side.
- Finish the button strip by folding the seam allowance wrg/wrg over the entire length and the marking line “B” wrg/wrg.
- Initiate the hem by folding 1.5cm twice at the bottom of the fronts. Slide the beginning of the hem under the button strip.
- Topstitch the button strips at 2mm of the fold over the entire length.



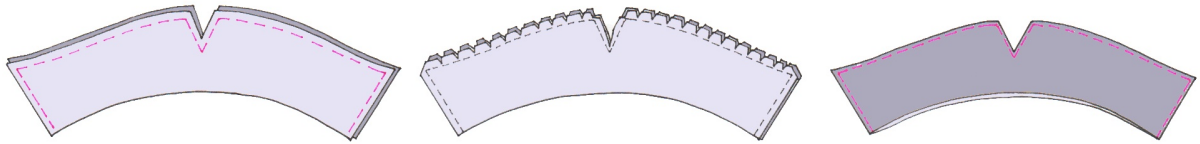
4. THE SHIRT

- Pin the back and the fronts right/right. Stitch the shoulders. Clean-finish the allowances together. Iron them towards the back.
- Stitch the sides (hem unfolded). Careful, at the bottom of the sides, the seam must stop on the seam line.
- Clip the allowances on the armpits' curve. Straighten the curve up to obtain a straight seam allowance. Clean-finish the allowances together. Iron them towards the back.



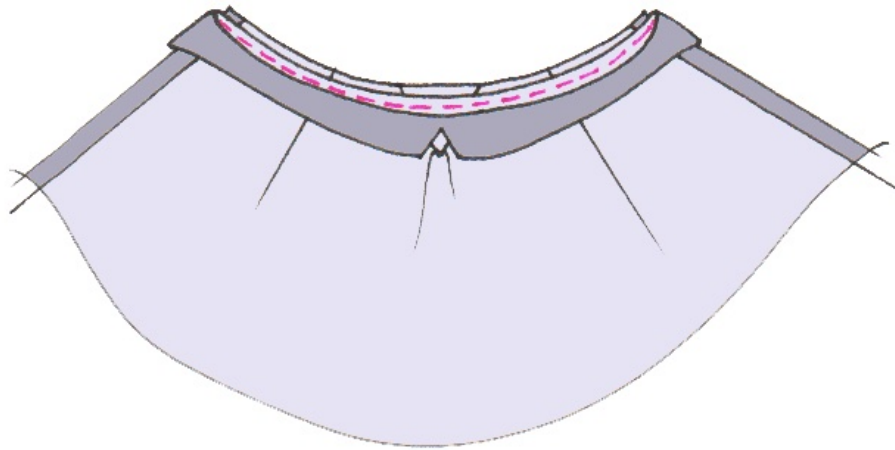
5. THE COLLAR

- Pin the collars right/right. Stitch the sides and the top. Clip the angles and the curves. Turn the collar on the right side. Iron. Topstitch at 2mm from the edges.



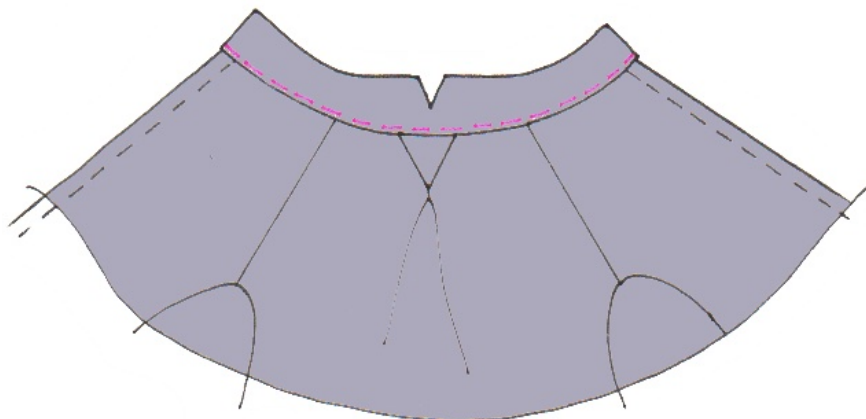
- Pin one layer of the collar (the one with fusible interfacing) on the right side with the wrong side of the shirt. The middle of the collar must match with the inverted pleat seam on the back of the shirt. The edge of the button strips must match with the ends of the collar.

- Stitch the neckline.



- Pick the collar up and put the shirt's seam allowance between the two layers of the collar.

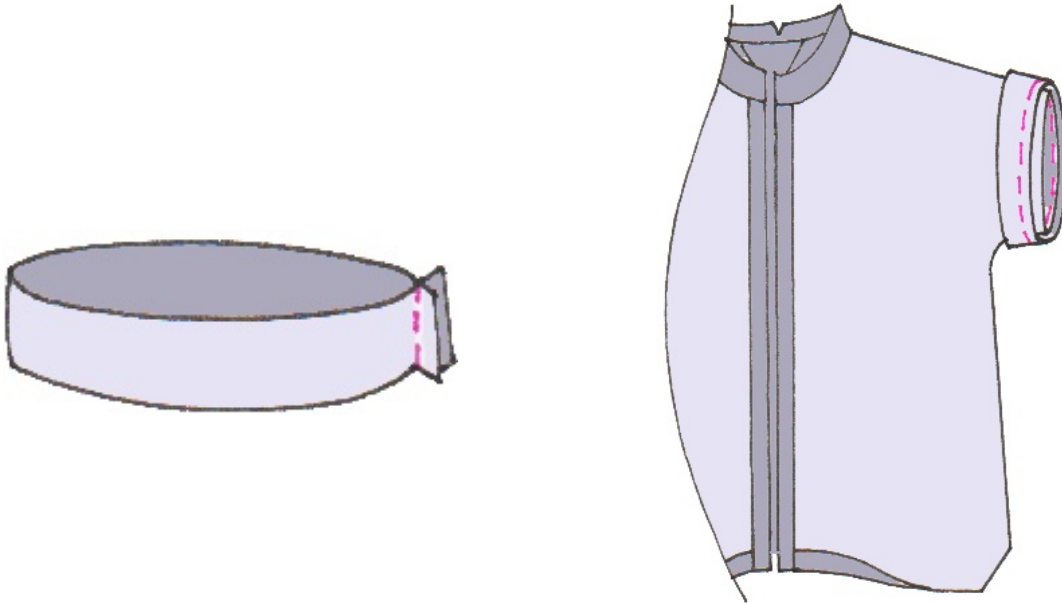
- Fold the seam allowance of the 2nd piece of collar wrg/wrg. On the right side of the work, put the pleat of the collar on the shirt to hide the previous seam. Topstitch at 2mm from the fold.



6. THE SEEM SLEEVE'S HEMS

- Fold the sleeve hems in two right/right to form rings. Stitch the small side. Press seams to open.

- Pin the right side of the ring with the wrong side of the shirt insuring to match the seam of the sides. Stitch all around.

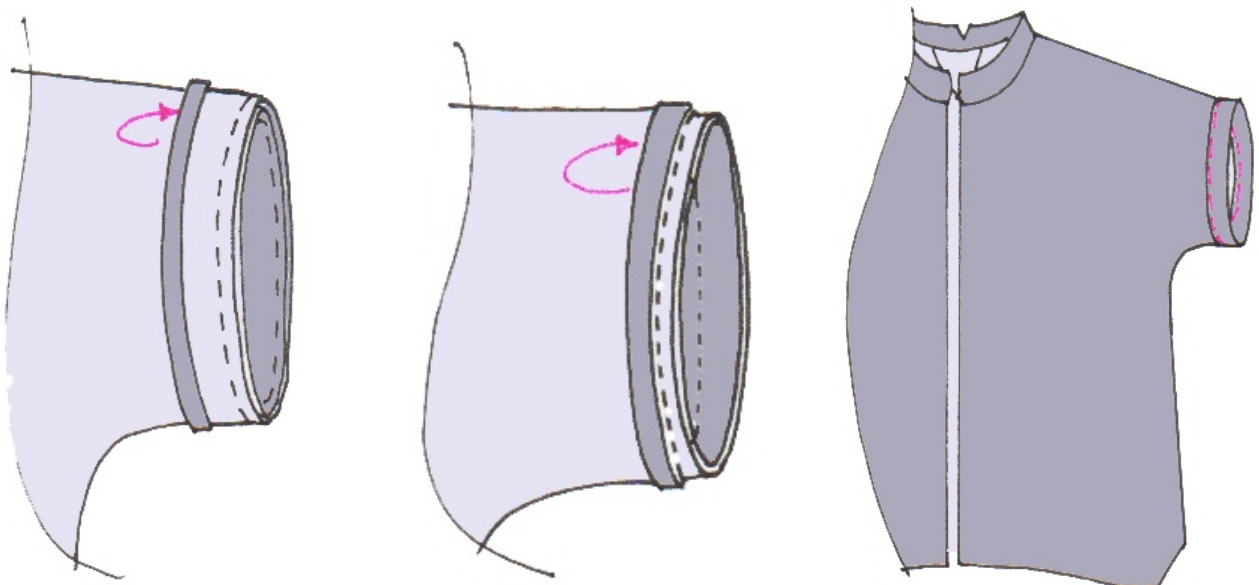


- Refold the seam allowance of the sleeve's hems wrg/wrg. Iron.

- Fold the sleeve's hems in two wrg/wrg, following the markings.

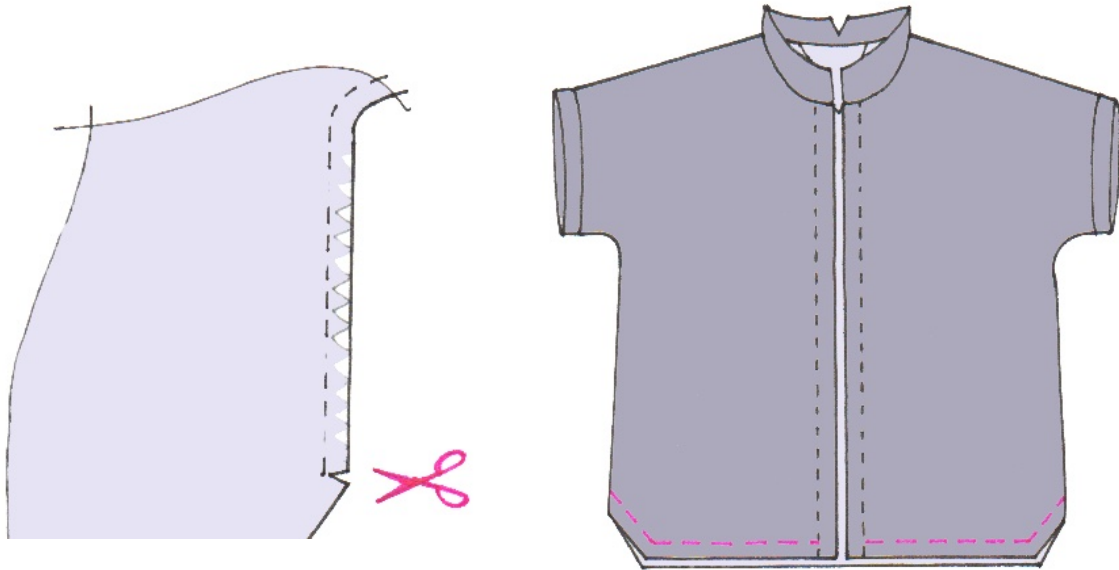
- On the right side of the work, put the fold of the sleeve's hems on the previous seam.

Topstitch all around at 2mm.



7. THE HEM

- Clip the seam allowances of the sides up to the height of the hem's seam line.
- At the bottom of the shirt, fold 1.5cm twice wrg/wrg; including in the angled cut.
- Topstitch at 1.8cm from the edge.



8. THE BUTTONS

- On the right half front (when worn), do buttonholes in upright position following markings and depending on your buttons.
- In the middle of the left button strip, sew the buttons coinciding with the buttonholes.





Congratulations !

You have finished your sewing. Now you only have to wear it or give it to someone. And don't forget to mention that you made it yourself!

Don't forget to show your creation and tell us about your feelings and ideas on social media with the hashtags :

#paristettepattern & #blousetterose

Join us on:



[Instagram](#)



[Facebook](#)



[Pinterest](#)

The book :

[L'Atelier couture de Blousette Rose](#)



editor : www.creapassions.com

See you soon!