



Instructions For Use

Using the pattern

Hello !

You're about to discover your new digital pattern from Blousette Rose.

This folder contains several files:

1. The instructions for use will help you make the best use of your pattern. (No need to print these instructions.)
2. The test page will guide you through the printing process and will provide you with the correct printing scale. (You must print the test page.)
3. The pattern in colour, at a 100%-scale cut in letter size sheets or cut in A4 sheets or on a A0 sheet.
4. The sew along (which you can view on your screen if you want to reduce your paper footprint).

Caution: you can only download the pattern three times. If you haven't done so yet, save it on your computer now.

Before you start:

Sewing is fun. Take your time and read cautiously the information and advice in these pages.



use of the products and intellectual property rights

The use of our patterns is exclusive to our clients and for a strictly private use.

Any reproduction or use for commercial purposes is forbidden.

Your right of use of the products is strictly personal and cannot be transferred nor handed over.

We remain the sole and unique owner of all the templates of the products, pictures, illustrations, sketches or other elements of the product, and of all the brands, commercial names, logos, etc., that are referenced.

You are never allowed to market, hand over, disseminate, distribute, reproduce, publish the products, partially or totally, on any medium nor modify, adapt, delete, copy, translate, copy, utilize in any way and by anybody without our written approval.

Please do not sell, rent or share this pattern. Please do not use the templates, texts or sketches for commercial purposes.

This pattern and the work accomplished to offer this pattern will enable you to create a garment that you'll be proud to wear or to give as a present and you had pleasure to sew.



the test page

You must make a printing test before you print the full pattern.

In doing so, you'll make sure to use the correct printing scale.

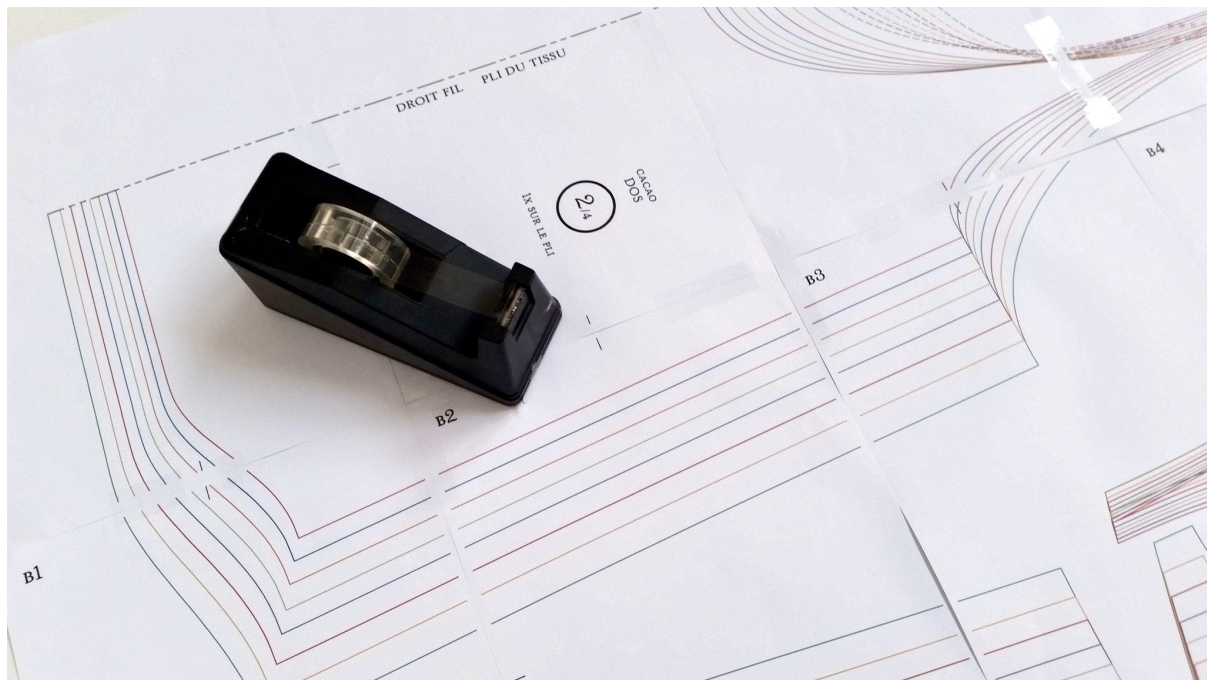
1. Open the printing software (File - Print).
2. The interface of the printing manager has several options. The presentation of this printing manager varies from one software to the other. Select the following options:
 - Page size: letter or A4 or A0
 - Orientation: Portrait
 - Colour
 - Scale: 100% or "Actual size" or "No support adjustment" or "No scaling of paper"
 - No margins
3. Print the test page and check whether the square measures 5cm by 5cm.
If the square does not correspond exactly to 5cm by 5cm, adjust the custom scale printing option:
 - It measures 5.4cm: adjust the scale to 92.6%
 - It measures 5.3cm: adjust the scale to 94.3%
 - It measures 5.2cm: adjust the scale to 96%
 - It measures 4.9cm or 5.1cm: that's acceptable.
 - It measures 4.8cm: adjust the scale to 104%
 - It measures 4.7cm: adjust the scale to 106%
 - It measures 4.6cm: adjust the scale to 109%
4. When the square has the appropriate size, print the pattern with the same printing options.

You don't have a printer? Most copy centres can print files from a usb stick.



the pattern

The complete pattern at a 100% scale is cut into letter size sheets or A4 size sheets or A0 sheets. In order to get a complete pattern, paste the sheets of paper together.



Use adhesive paper **to paste the sheets side by side. Make sure you align the landmarks** (grey stripes) and follow the map.

- Paste the sheets edge to edge. Do not cut them nor superimpose them.
- The printing margins cannot be avoided... Their width varies from one printer to another. Do not worry about the margins and simply paste the sheets edge to edge. You can extend the drawing in the sheets but it is not necessary. The pattern is divided so that the margins are in the basic sections of the drawing.
- The sheets are fed differently according to the printer. If the wedges of the paper tray are not correctly tightened around the unit of blank paper, it may cause skewed printing margins... Hence, it is very important that the printing landmarks (grey stripes in the centre of each page side) correspond even if the pages are slightly offset.



- There is a map on the test page that will help you recompose the puzzle. Each row is identified by a letter (e.g.: A) and each column is identified by a number (e.g.: 1). Sometimes a square is missing. This means it did not feature a piece of the pattern. It was useless to make you print a white page...

In order to prevent you from manipulating big surfaces of paper, you can copy and cut your pieces progressively.

choosing the correct size

If you chose to sew a garment, you will not have the opportunity to try it before you start sewing it... We all have a different face even if we have 2 eyes, 1 nose and 1 mouth. That also applies for the rest of our body: we're all different. Nobody will fall under a column of theoretical measurements. Read the following advice to get the best result.

1. Measure your body parts as close to the skin as possible, using a measuring tape.
2. Write down the needed measurements, nothing more. Be rational: there is no use choosing an overall size according to the knee turn... Do not worry about the knee turn if the pattern of the pants is large... On the contrary, do take it into account if the pattern of the pants is slim.
3. Use visual information. You can see how a garment is worn on the pictures. Since we are all different, there will be slight differences on how a garment is worn too. However, only mentally "re-draw" the pattern if you intend to change the initial pattern.
4. Take notes in parallel with the table. Chose the biggest measurements. Depending on your degree of expertise, you can eventually adjust the pattern to get a compromise. E.g.: bust between sizes 36 and 38 /waist between sizes 38 and 40. If the pattern is curve-shaped, opt for size 40. If the pattern is wide-shaped, opt for size 38.
5. If you want a custom-made pattern, make a canvas pattern. Use an old sheet or a



cheap cotton canvas to make your own prototype. Of course it takes time. But you'll be able to try it on! To gain time, you can skip all the finishing steps such as stitching, hem stitching, bias making, etc. The aim is to simplify the garment as much as possible so that you only cut and sew what is needed to help you visualize the design once you wear it. You will then be able to adapt the pattern accordingly (not the garment) using your knowledge and research on the topic.

the sew along

The sew along will guide you through the making of your sewing work. It includes:

- the presentation of the design
- the measurements that you have to take into account
- the needed supplies
- the instructions on how to cut the fabric and prepare the pieces
- the different steps - illustrated - to assemble the pattern

Some advice:

- Immediately spot the colours representing the right or the wrong side of the fabric and the lining, if any.
- Write down the following abbreviations: « rght » = right, « wrg » = wrong, « / » = against.
- Read each text and examine each sketch cautiously.
- Trust the assembly instructions ;-)

Enjoy the sewing!