

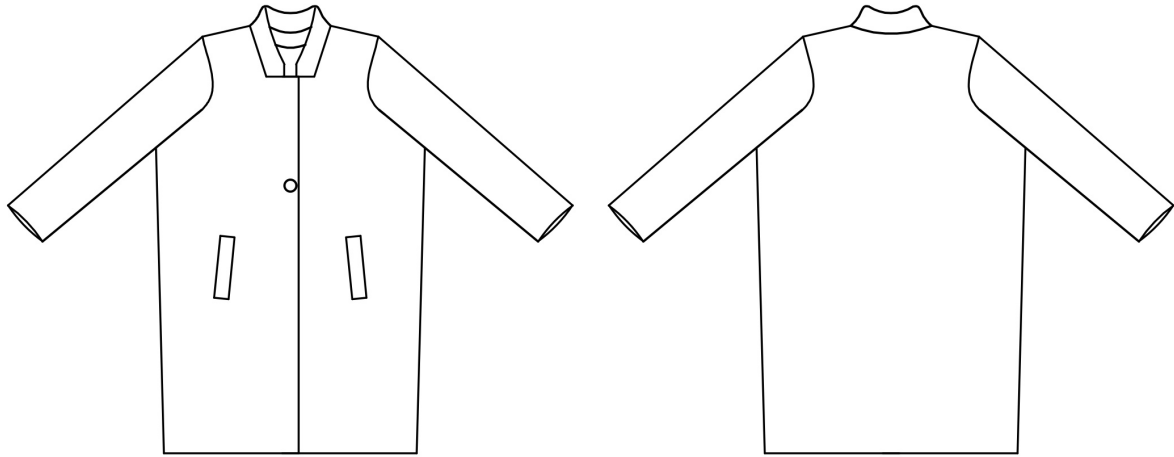


Ive - The Long Coat

sew along



design



Ive is a long coat that you can wear when going out in the city. This timeless design is a “chic” basic for your wardrobe.

- straight coat
- length: to the knees
- collar placed on an angle
- raglan placket pockets
- closed with a button
- lining with ease



size chart

	1	2	3	4	5	6	7
stature	1,68m	1,68m	1,68m	1,68m	1,68m	1,68m	1,68m
bust	83cm	87cm	91cm	95cm	100cm	105cm	111cm
full hips	90cm	94cm	98cm	102cm	107cm	112cm	118cm
back	34cm	35cm	36cm	37cm	38,25cm	39,5cm	41cm
arm length	61,5cm	62cm	62,5cm	63cm	63,6cm	64,2cm	64,9cm
upper arm width	26cm	27cm	28cm	29cm	30,25cm	31,5cm	33cm

* Measure the waist where the rib cage is hollow, on top of the navel.

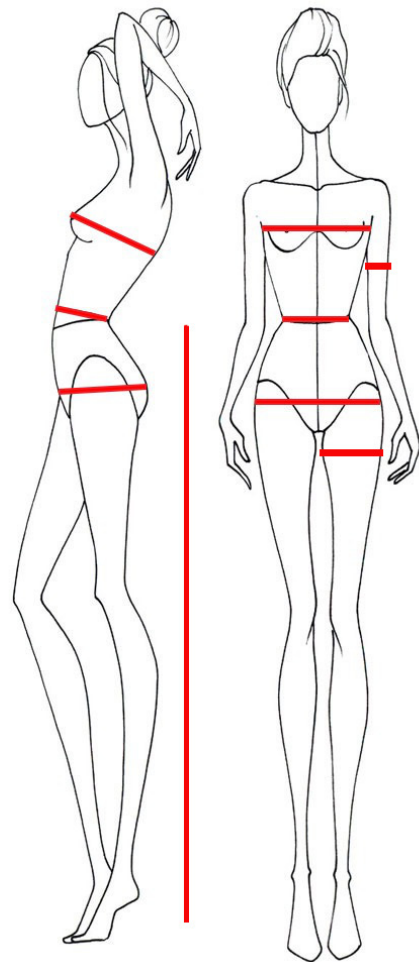
* Measure the full hips at the height of the buttocks.

* Measure the back from one armpit to the other.

* Measure the arm width at the height of the upper arm.

* Measure the legs from the waist down to the floor.

* Measure the thigh circumference 10cm underneath the crotch.





supplies

Fabric: medium to thick wool cloth, boiled wool, wool, wool twill...

Thin lining for ease of wear, not static and breathable such as acetate taffeta, acetate satin, acetate pongee. ([Read the article on linings on the blog.](#))

	1	2	3	4	5	6	7
fabric if width 1,40m	2,20m	2,20m	2,20m	2,20m	2,20m	2,20m	3m
lining if width 1,40m	1,80m	1,80m	1,80m	1,80m	1,90m	1,90m	1,90m
fusible interfacing for wool fabric	110cm x 90 cm	110cm x 90 cm	110cm x 90 cm	110cm x 90 cm	110cm x 90 cm	110cm x 90 cm	110cm x 90 cm
buttons diameter 2,5cm	1	1	1	1	1	1	1
thread	*	*	*	*	*	*	*

caption & abbreviations

right/right: right sides together

right/wrg: right side on wrong side

wrg/wrg : wrong sides together

RIGHT SIDE OF THE FABRIC

WRONG SIDE OF THE FABRIC

RIGHT SIDE OF THE LINING

WRONG SIDE OF THE LINING

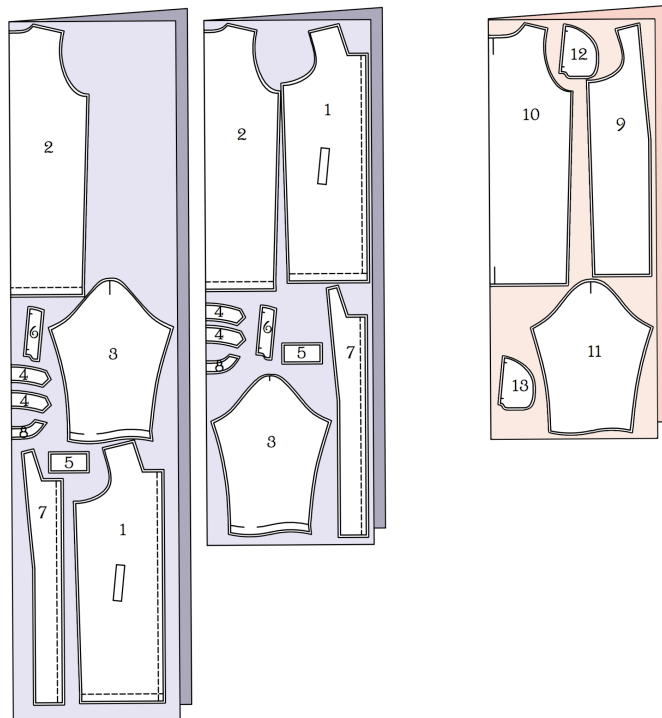


cutting layouts

Advice: wash your fabric before cutting it to prevent it from shrinking once put together and washed for the first time. To do so, topstitch the edges of the cut fabric and put it in your washing machine set to the program adapted to the type of fabric. Once sewn, use the same washing program.

Seams allowances are not included in the pattern. For this model, add 1cm everywhere.

pattern within size :



CUTTING THE FABRIC

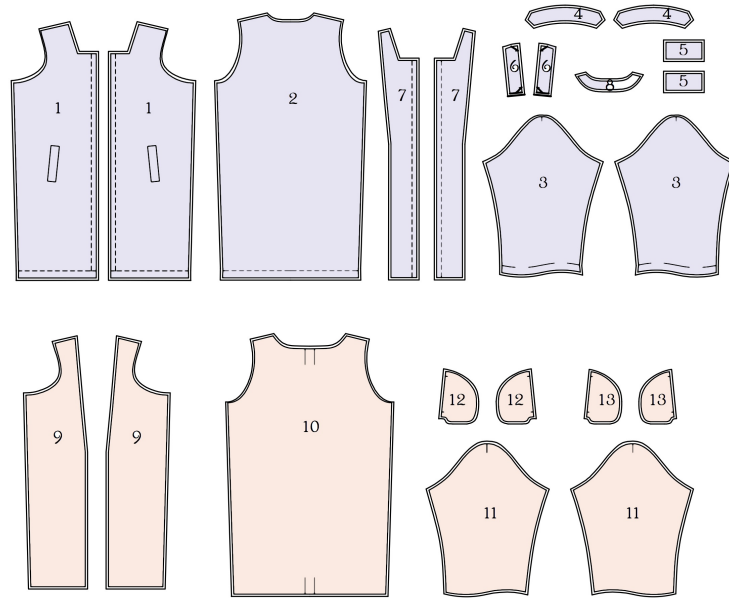
1. Front: cut 1 in double
2. Back: cut 1 on the fold
3. Sleeve: cut 1 in double
4. Collar: cut 2 on the fold
5. Pocket placket: cut 1 in double
6. Cleanliness pocket base: cut 1 in double
7. Facing front: cut 1 in double
8. Facing back: cut 1 on the fold

CUTTING THE LINING

9. Lining front: cut 1 in double
10. Lining back: cut 1 on the fold
11. Lining sleeve: cut 1 in double
12. Pocket base underside: cut 1 in double
13. Pocket base top side: cut 1 in double



inventory



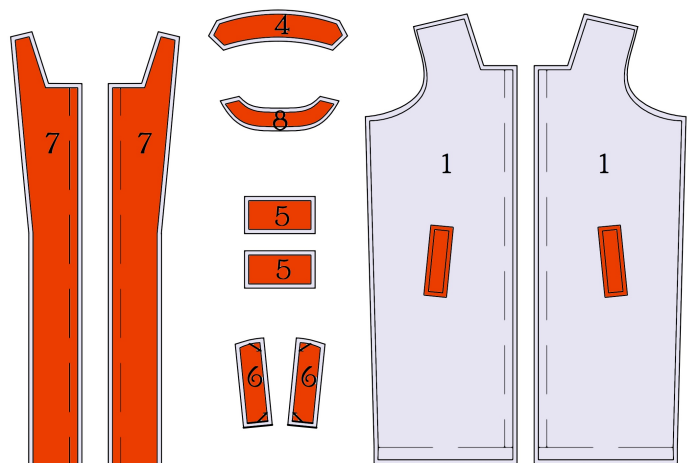
clean-finish edges

This pattern has a lining so you do not have to clean-finish the edges.

interfacing

Apply fusible interfacing to wrong side of these pieces.

Before interfacing the pocket positions on the front, transfer the position marks of the pockets on the right side of the fabric using discreet carbon paper

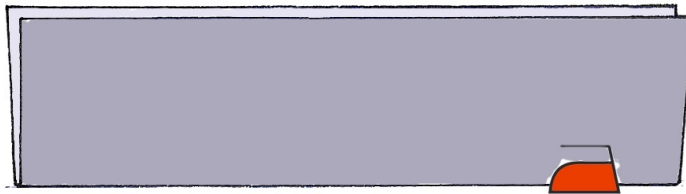




sew along

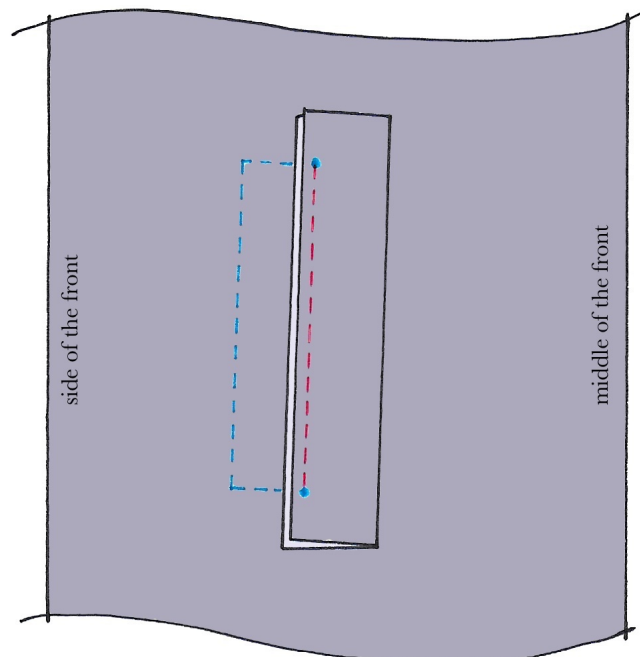
1. RAGLAN POCKETS WITH PLACKETS

- Fold the pocket plackets (5) in two right/right. Press to mark the fold.



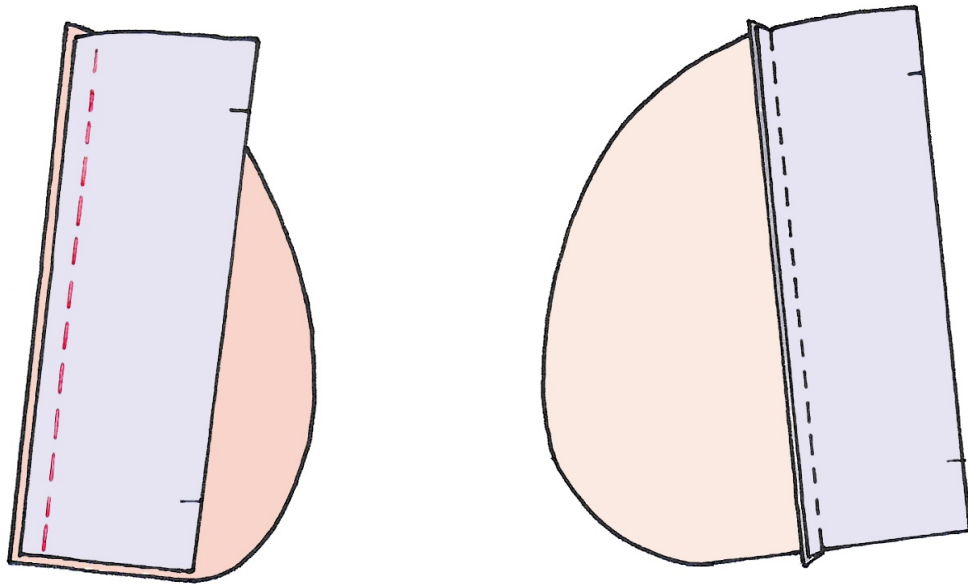
- Put the plackets (5) on the right side of the fronts (1), along the inner oblique (towards the middle of the garment): the marks of the plackets correspond to the angles of the plackets drawn on the fronts, the seam allowances of the plackets towards the frame drawn on the fronts.

- Stitch on the seam line, exactly from one mark to the other.

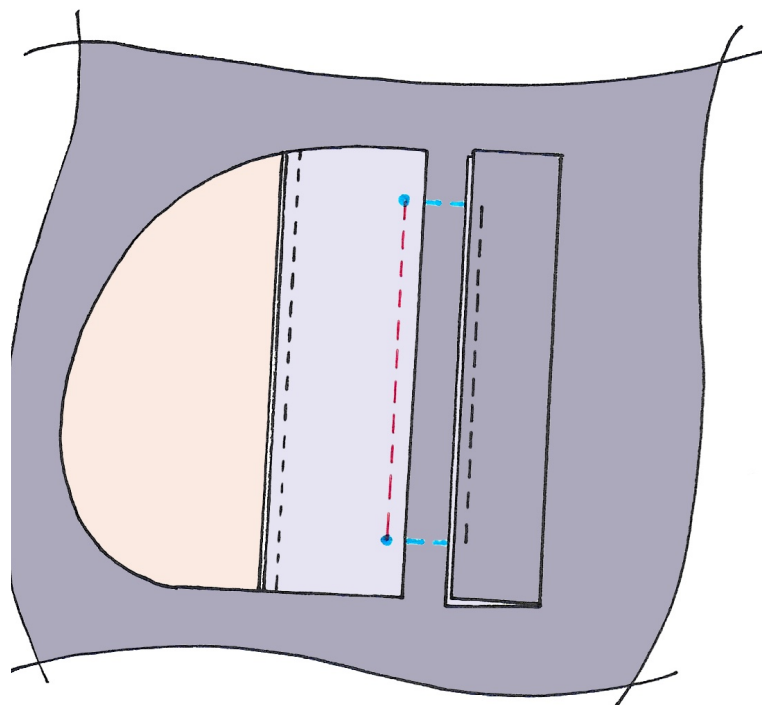




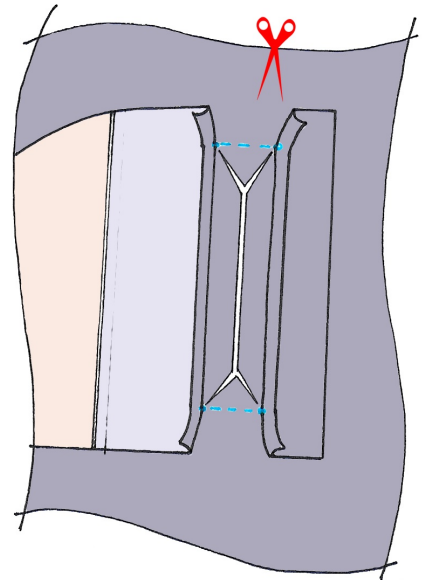
- Pin the cleanliness sections (6) with the pocket base top side (13) right/right. Stitch with right sides together. Press the seam allowances towards the back of the pocket in lining.



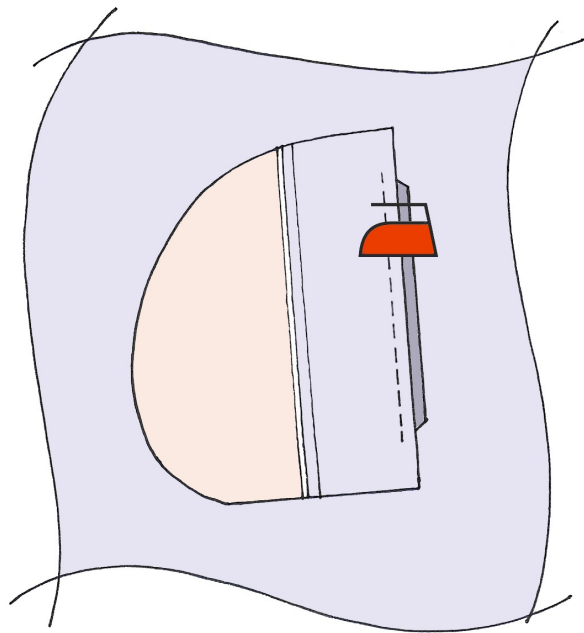
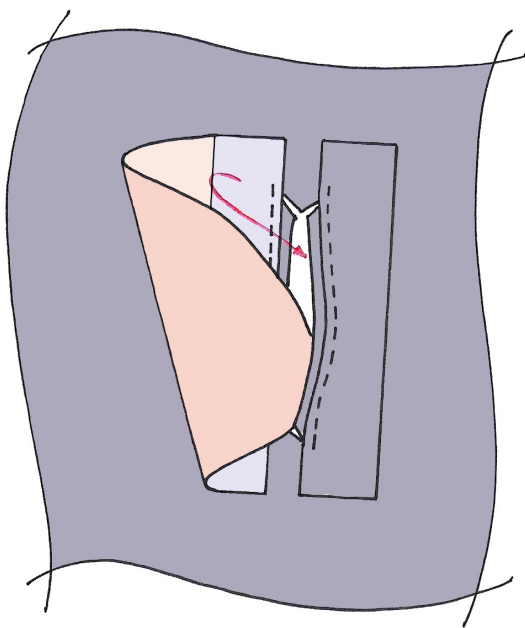
- Pin the cleanliness sections (6) with the fronts (1) right/right. Match the marks with the drawn frame. Stitch exactly from one mark to the other.



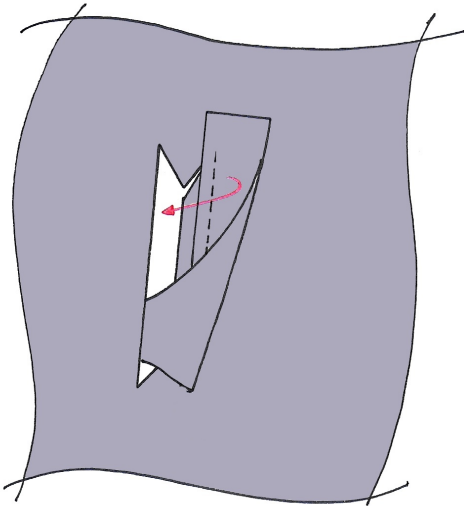
- Turn the cleanliness sections and plackets to the side to cut the fronts (1) in a Y-shape until the very last stitch. Caution: this step requires a lot of precision.



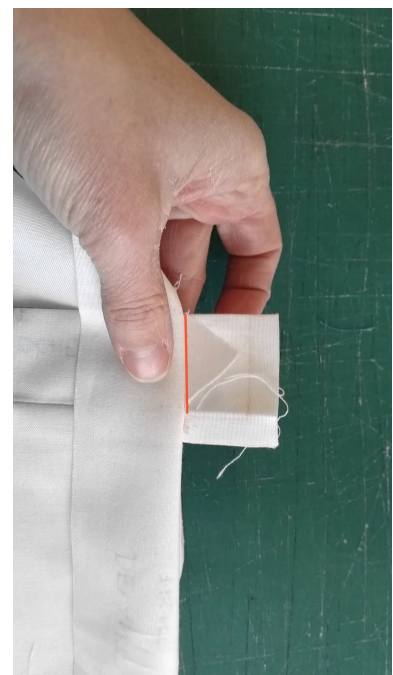
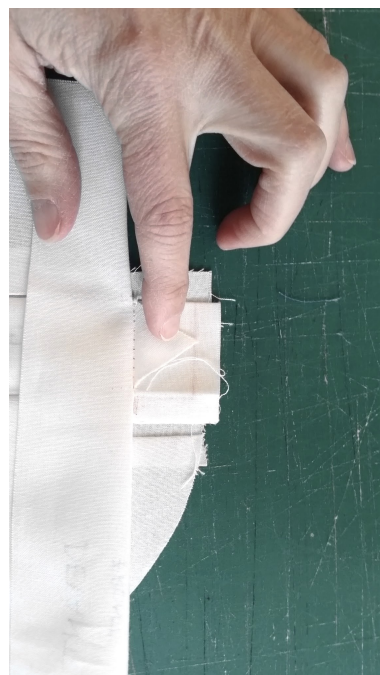
- Push the pocket base top side and the cleanliness section through the vent to bring them on the back of the fronts. The plackets remain on the right side. Press..



- Bring the plackets (5) towards the outside and bring the ends through the vents.
Press.

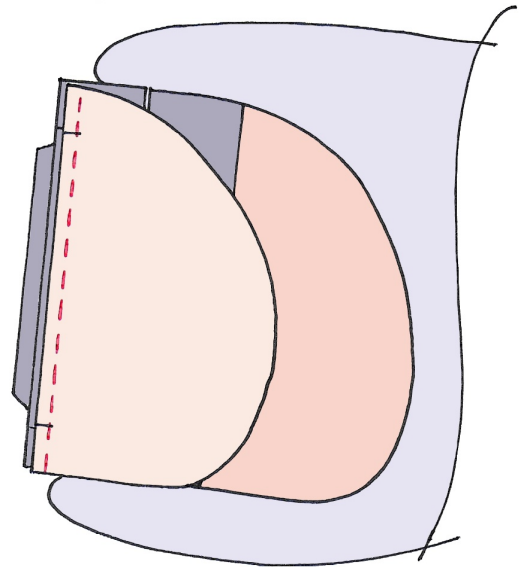
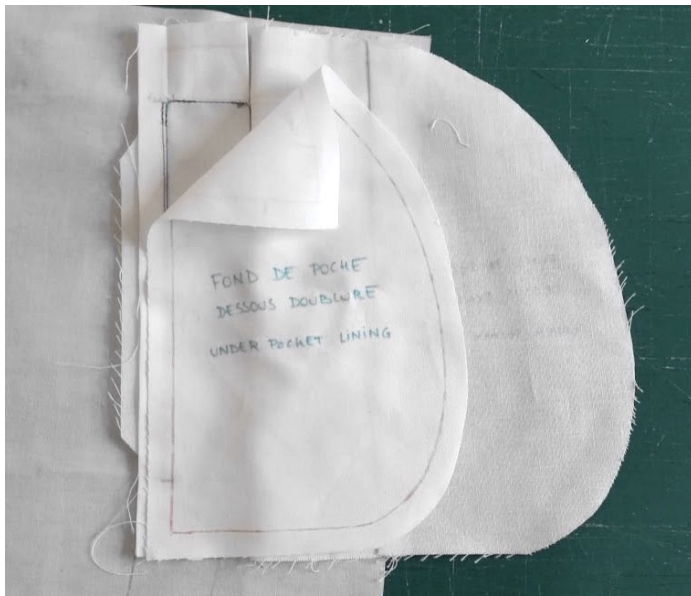


- Isolate the small rectangles made with the Y-section and the ends of the plackets.
Turn the remaining sections to work. Stitch alongside the pressed fold.

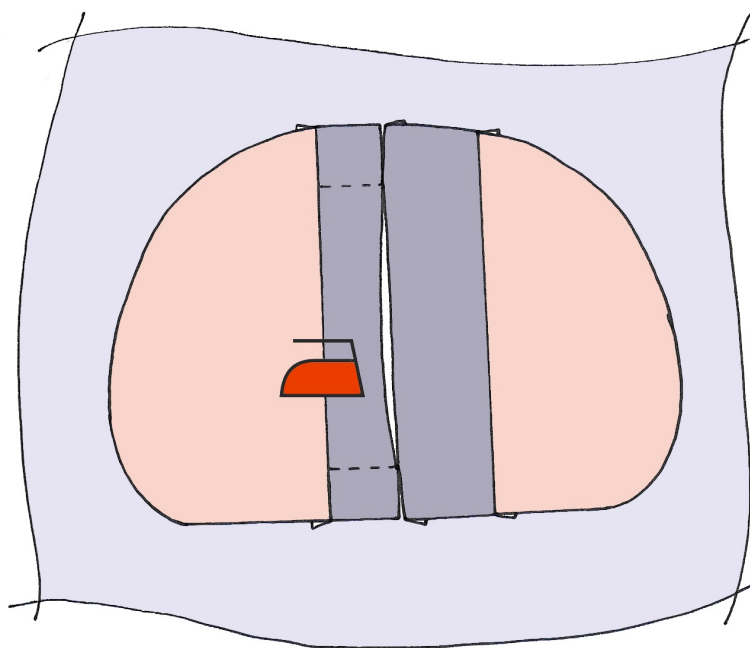




- On the wrong side of the coat, turn the pocket base top sides. Pin the pocket base top sides (12) in lining with the seam allowance of the plackets right/right, align the marks.
- Stitch without the fronts in the seam.

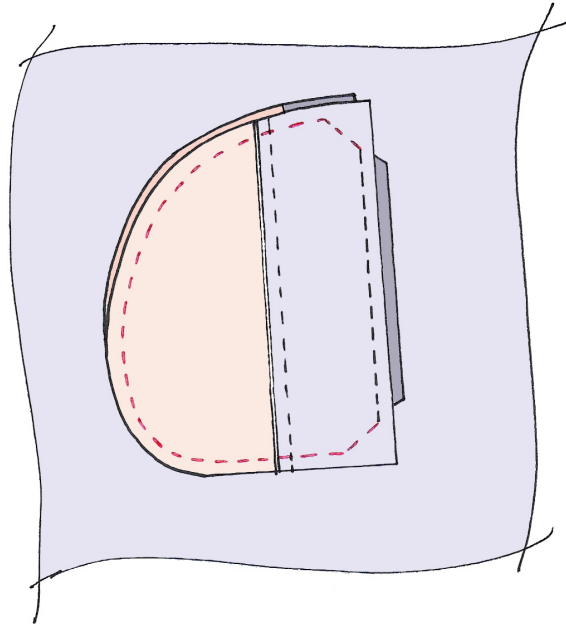


- Turn the base top sides (12) in lining. Press.



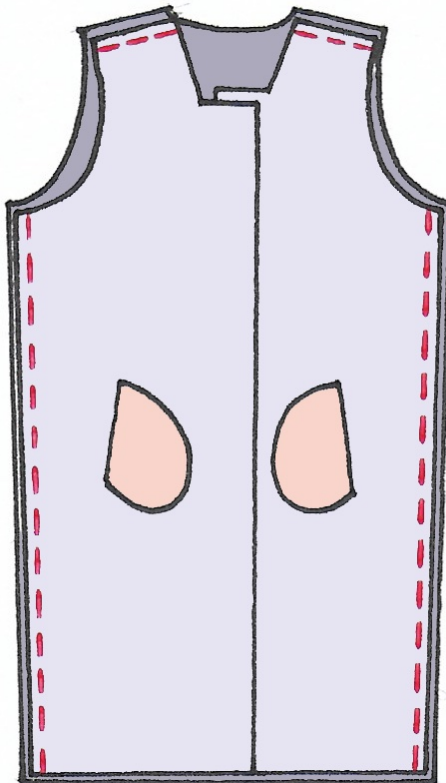


- Pin the pocket base top sides in lining right/right. Stitch the curve of the pockets. Start and end the seams at the marks without stitching the coat in the seam.

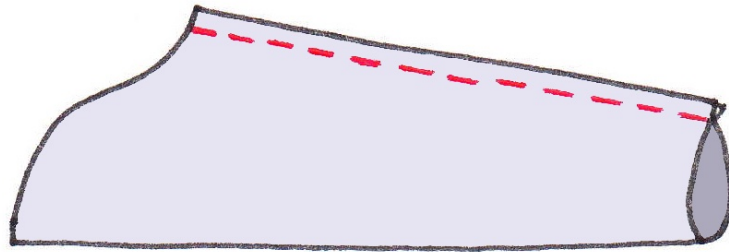


2. TOP FABRIC

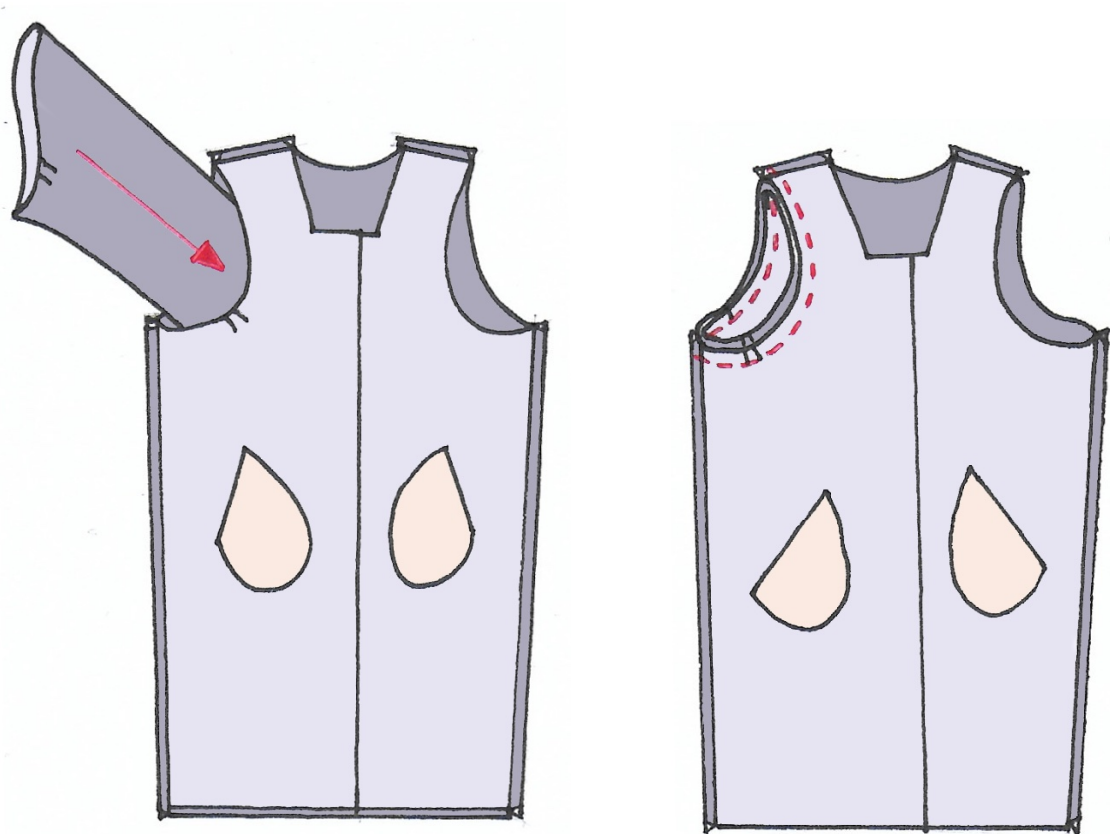
- Pin the fronts (1) with the back (2). Stitch the shoulders. Press seams to open.
- Stitch the sides. Press seams to open.



- Fold the sleeves (3) right/right. Stitch the sides. Press seams to open.



- Turn sleeves on the right side and turn the coat on the wrong side.
- Slip the sleeves inside the coat and match the marks.
- Stitch the armholes.

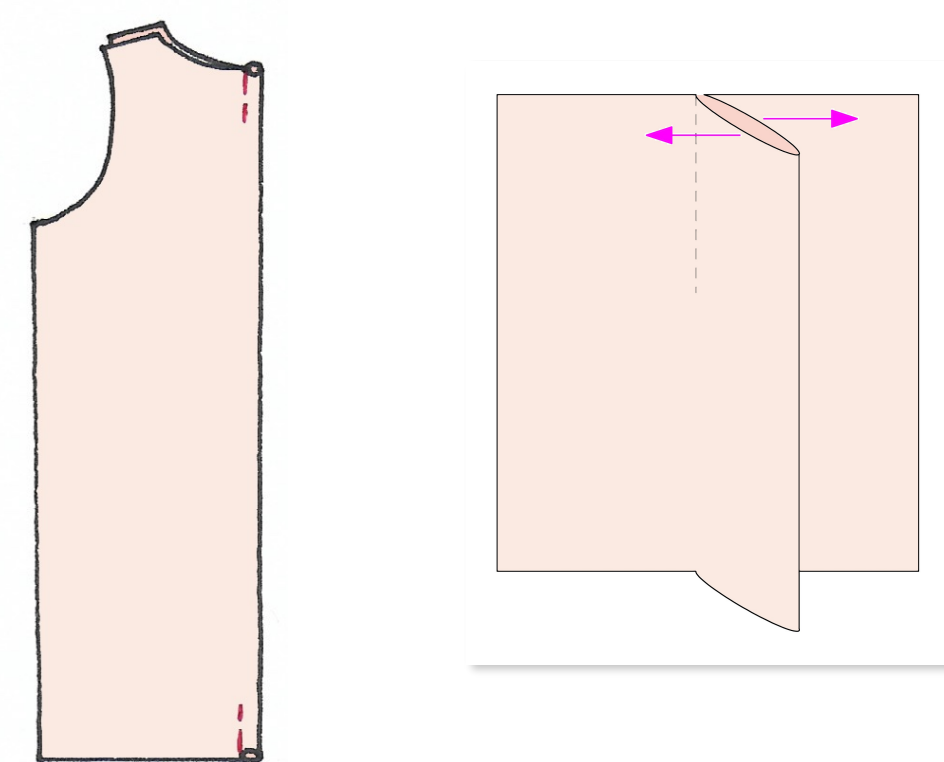




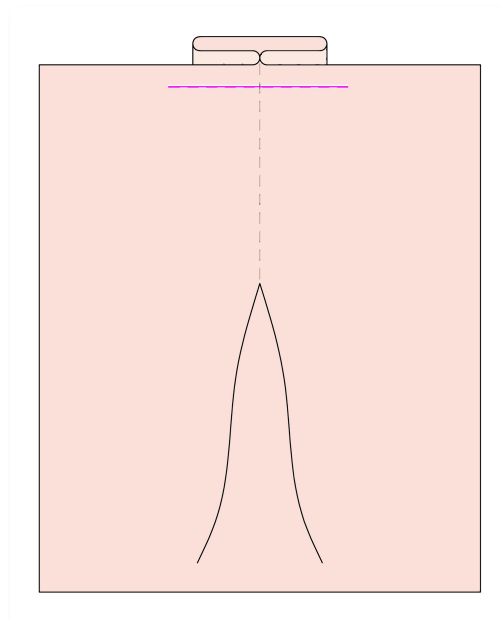
3. LINING

Make the box pleats in the back of the lining (10):

- Fold the back (10) along the middle, right/right, to match the marking lines.
- Stitch the marking lines at the top and the bottom of the back.
- Open the box pleats. Press.



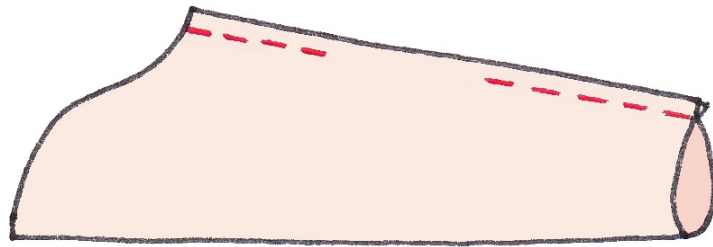
- Pin the box pleats and stitch them in the seam allowances.





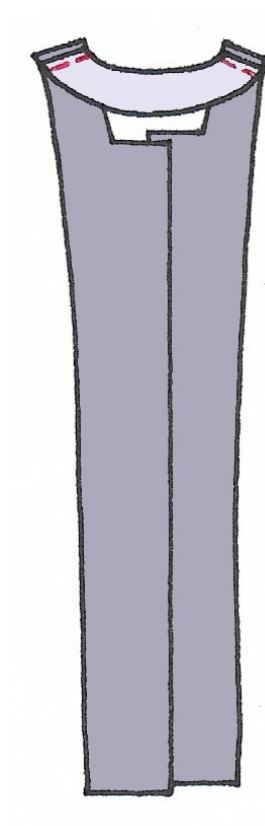
- Pin the fronts in lining (9) with the back in lining (10) right/right. Stitch the shoulders and the sides. Press seams to open.

- Pin the sleeves in lining (11) as for the coat BUT leave a 20 cm opening in the side seam of one of the sleeves.



4. FACING

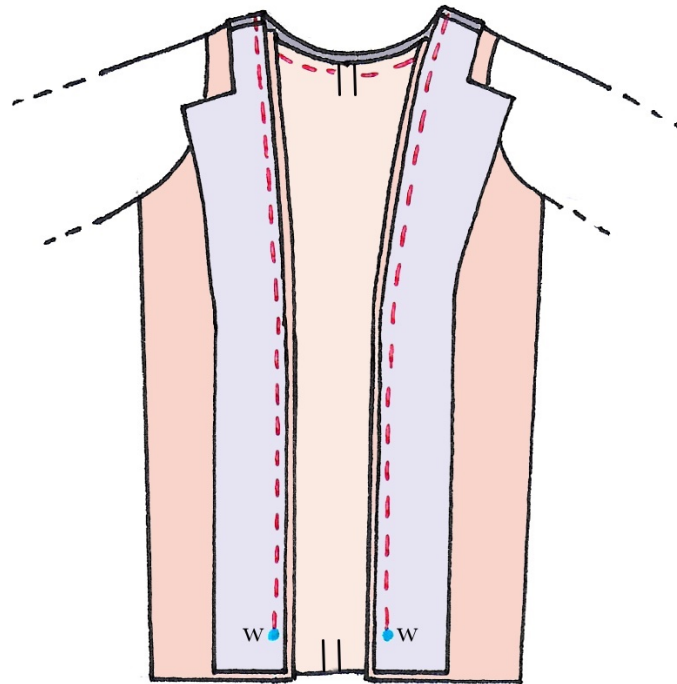
- Pin the front facing (7) with the back facing (8) right/right. Stitch the shoulders. Press seams to open.



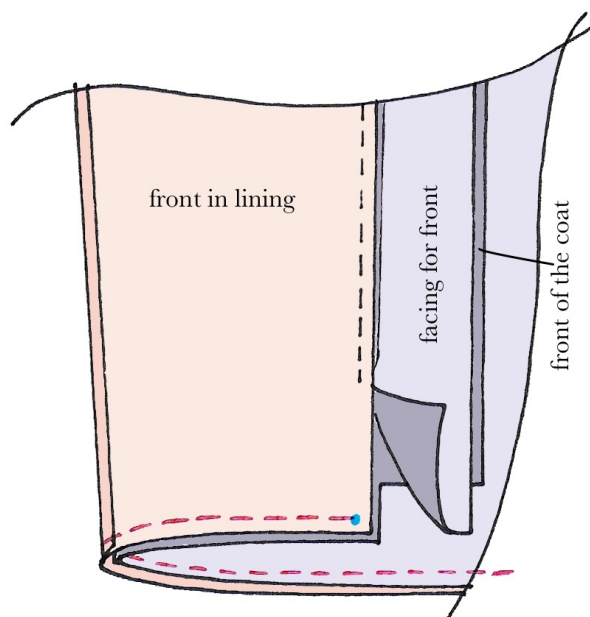


5. HEM WITH EASE

- Pin the facing with the lining, from top (middle of the back) to the “w” marks, right/right. Stitch from “w” to “w”.

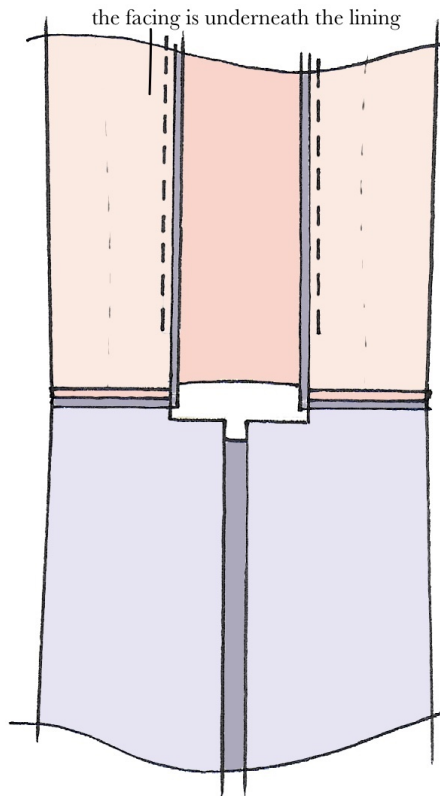


- Pin the bottom of the lining with the bottom of the coat right/right. Stitch from the angle of the lining to the angle of the opposite lining.



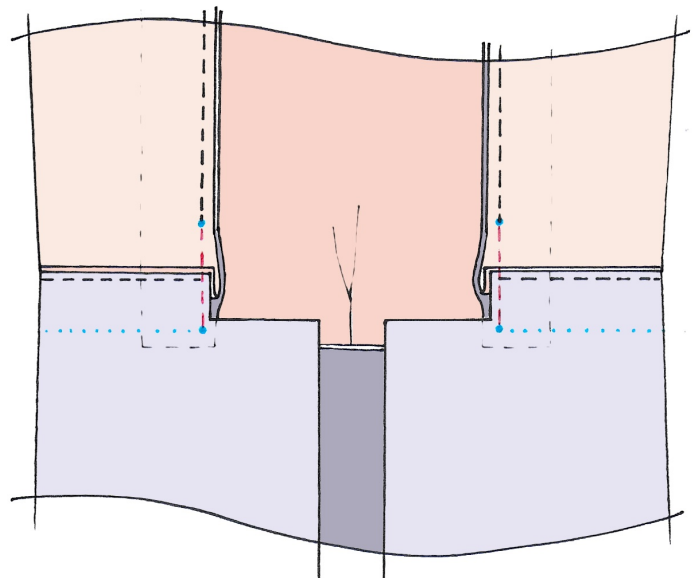


- Position the pieces to continue the assembly: the facing underneath the lining (right/right). Lining and coat are separate.

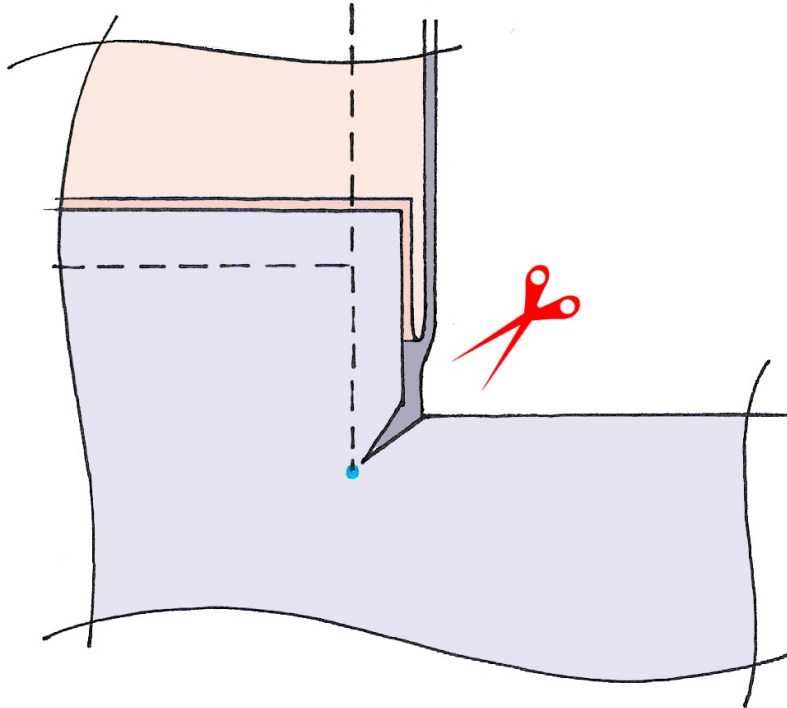


- Match the inside angle of the hem of the coat with the inferior angle of the facing. The lining then has a surplus.

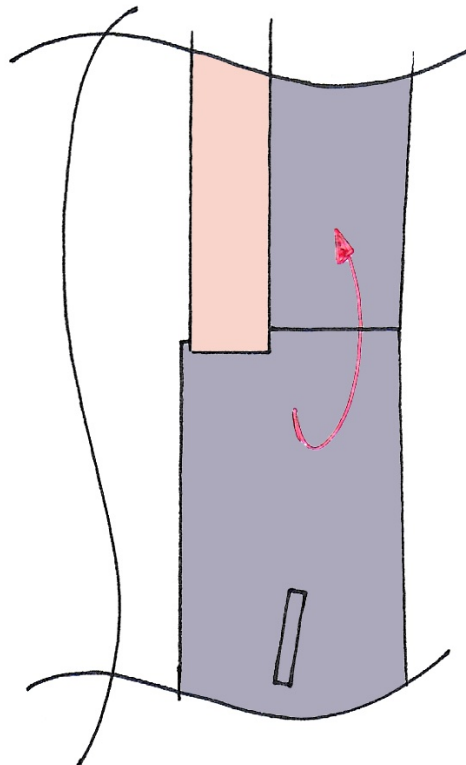
- Fold the surplus of fabric from the lining underneath the hem of the coat in order to put everything nice and flat between the “w” mark and the bottom of the facing. Stitch from the “w” mark to the inside angle of the hem.



- Clip the inside angle of the front hem without cutting the facing.

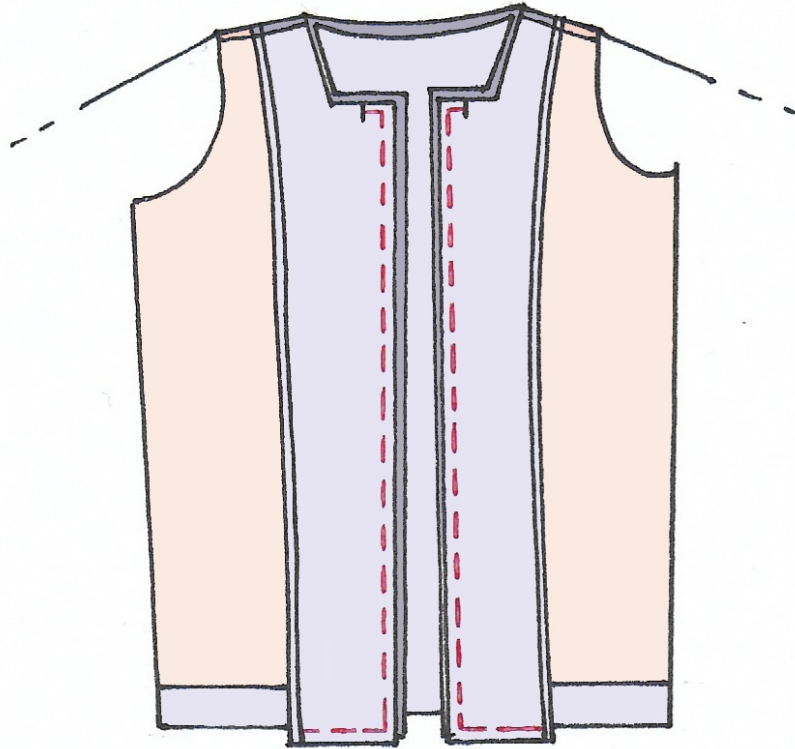


- Position the facing next to the lining.
- With the clip, position the wool coat against the lining and the facing right/right.



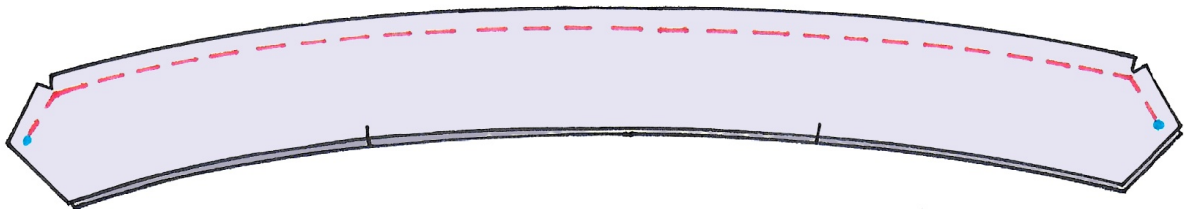


- Pivot the angles and stitch the bottom of the facing and the fronts and middle of the coat until the “y” marks. You need to stitch twice separately.



6. COLLAR

- Pin the collars right/right. Stitch the top of the collars, from one “y” mark to the other “y” mark, while pivoting the angles.
- Clip the sewn angles.



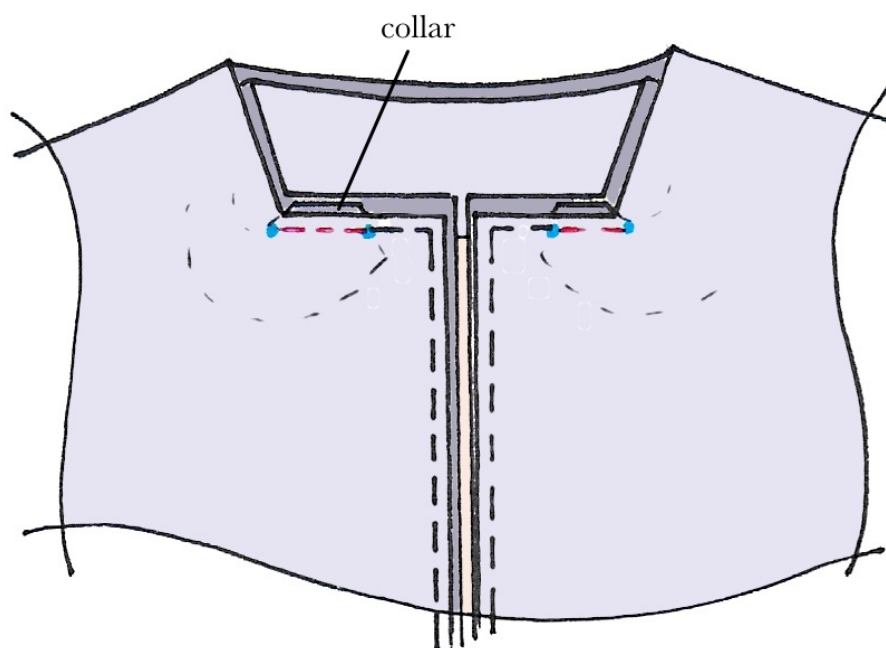
- Turn the collar on the right side. Press.



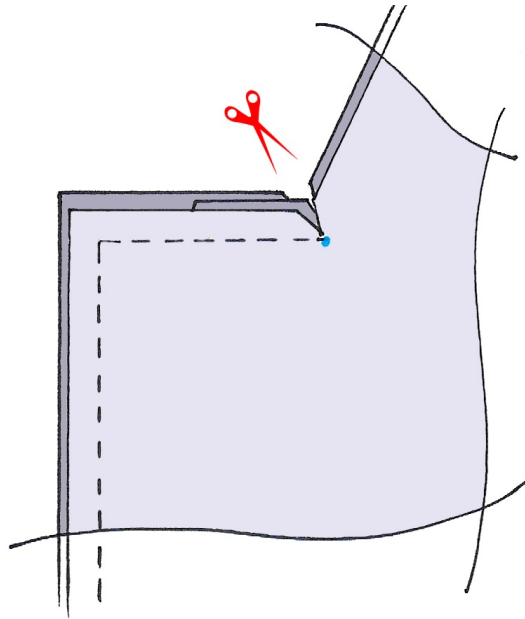
- Put the collar between the coat and the facing. The interfaced collar is against the facing. Put the sewn end of the collar (“y” mark) against the interrupted seam at the “y” mark. Match the “x” marks.



- Stitch the sandwich from “y” to “z”. Repeat on both sides. Caution: do not twist the work.

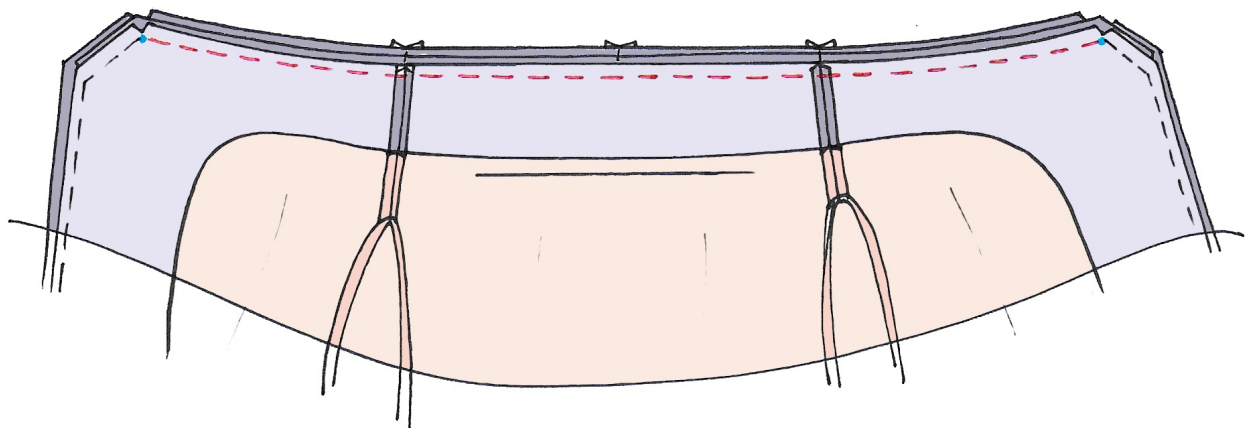


- Clip the 4 angles marked “x” (2 for the fronts and 2 for the facings) without cutting in the collar. Be very careful... If the clip goes too far, there will be a hole... If the clip is too small, the fabrics will not position properly and it will be difficult to sew the work without creases. The clip must go until the very last stitch of the seam.



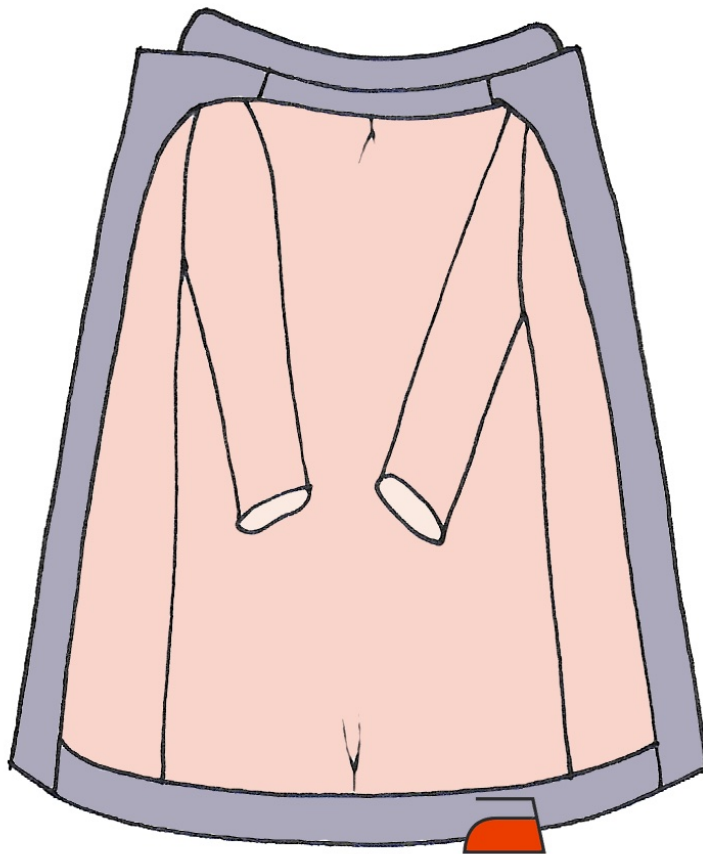
- With those clips, position what's left of the collar alongside the neckline of the coat and the facing. The middles of the back match together, and the collar marks match to the shoulder seams. Position coat and facing right/right.

- Stitch the sandwich from one “x” mark to the other “x” mark.





- Clip the superior angles of the facings, the fronts and the curve of the collar.
 - Clip the inferior angles of the facings.
 - Press the seam allowances in wool towards the lining.
 - Turn the work on the right side through the opening in the sleeve.
 - In the bottom of the coat, fold the 3 cm hem wrg/wrg (on the marking line of the pattern) and extricate the lining. There are 3cm wool inside the coat.
- Press to mark the fold.

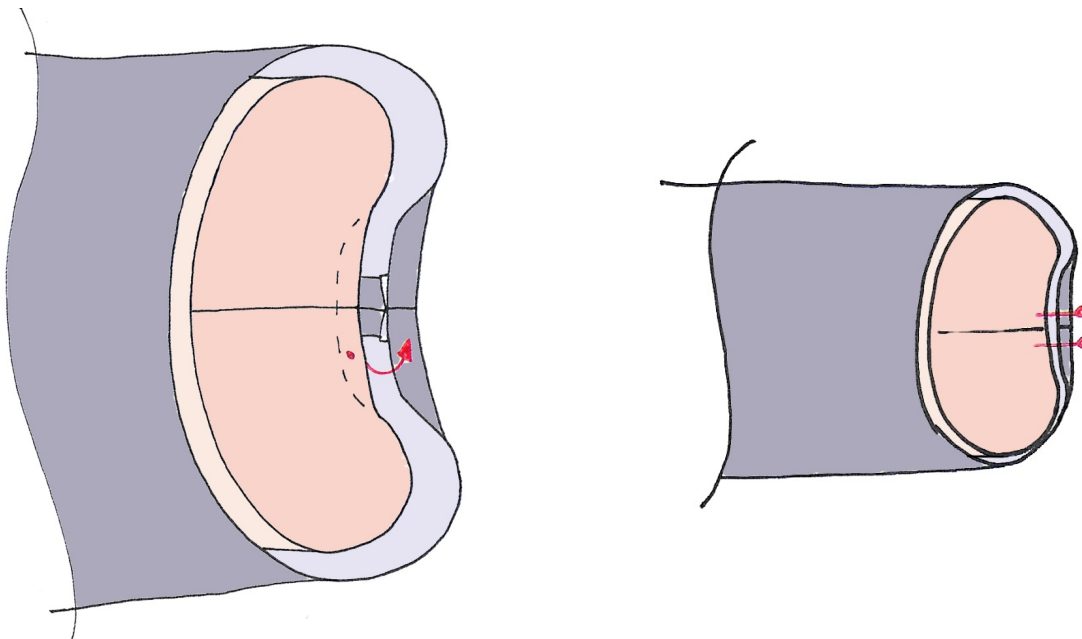


7. WRISTS

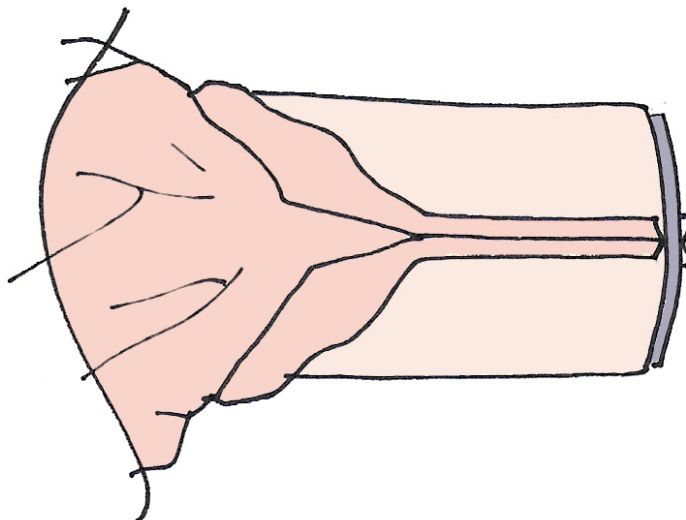
- Position the sleeves in lining correctly in the wool sleeves. Make sure they do not twist.

Position coat and facing right/right.

- Fold the 1cm seam allowance right/right at each wrist, up to the seam.
- Pin to position the previous fold.

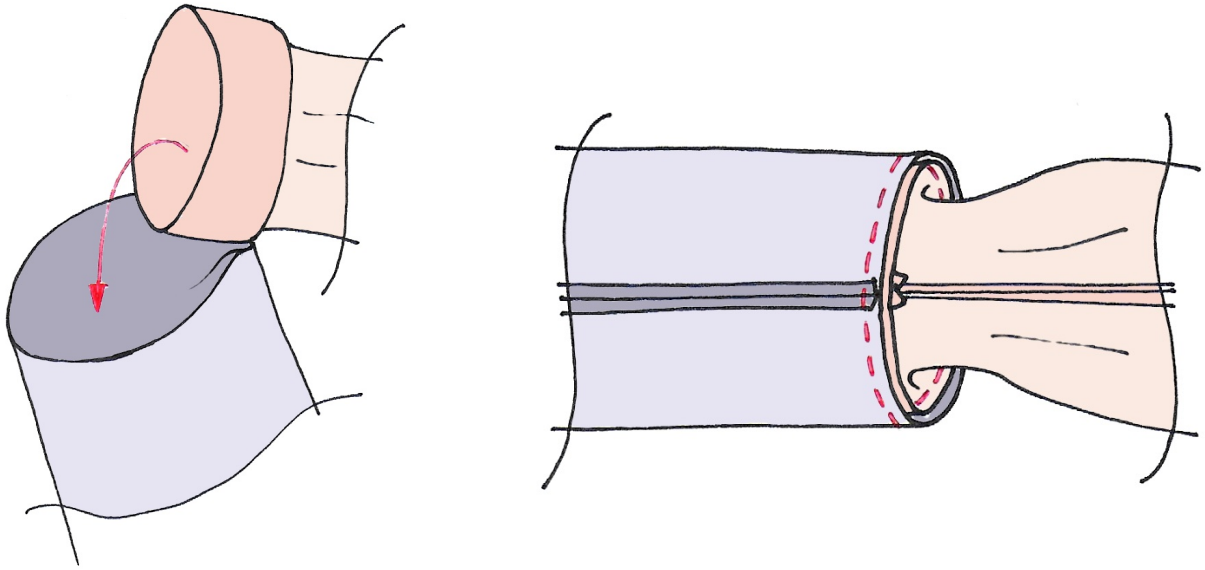


- Through the opening in the side of the sleeve in lining, catch a wrist without removing the pin from the previous step. The sleeves seem to twist but the pin maintains the correct twist so that all pieces come in place afterwards.





- Fold the sleeve in wool on 5 or 6 cm right/right as if rolling up a child's sleeve.
- Put the sleeve in lining inside the sleeve in wool. The sleeve in wool comes on top of the sleeve in lining. The wrists are still right/right. Pin.
- Stitch the wrists while turning around the sewing foot of the machine.



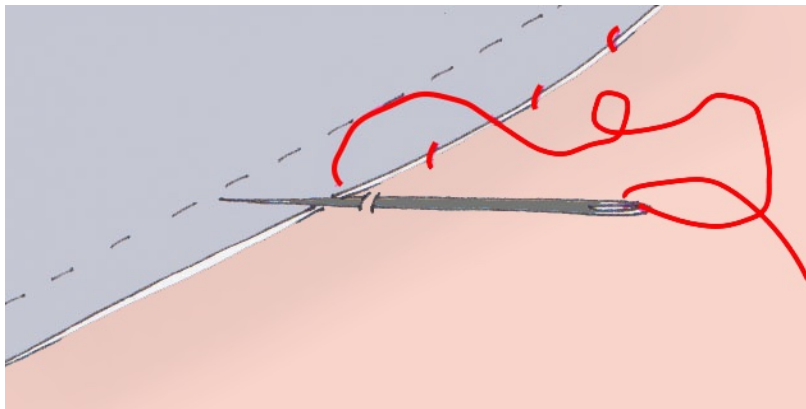
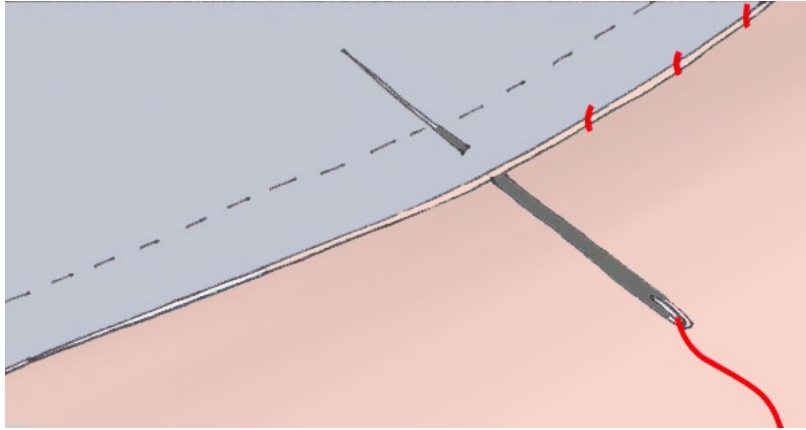
- Position the sleeves correctly through the opening in the side of the sleeve in lining.
- Fold 3cm of each sleeve in wool right/right (on the marking line of the pattern) and extricate the lining. There are 3cm wool inside each wrist. Press to mark the fold.

8. HEM FINISHING

Glaze the bottom hem and the wrist (one at a time).

- Pull out the hem through the opening in the sleeve in lining.

- With the hand, make an invisible stitch to pin the seam allowances of the hem to the wool work.



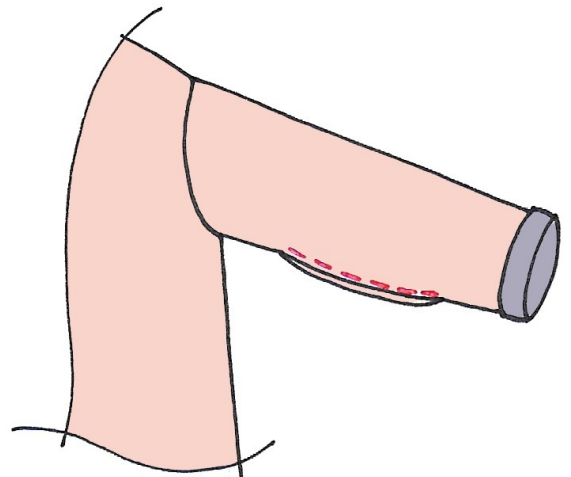
- Position the coat correctly.

Press the lining from top to bottom to mark the inverted pleat at the bottom of the coat and the sleeves.

- Close the opening in the sleeve in lining.

To do so, fold the seam allowances right/right.

Superimpose the pleats. Topstitch at 2mm..





9. BUTTONS

- Make a buttonhole on the right front (when worn) according to the mark drawn in the pattern and the diameter of your button.
- Sew a button matching with the buttonhole and according to the mark on the left front.

Congratulations !

You have finished your sewing. Now you only have to wear it or give it to someone. And don't forget to mention that you made it yourself!

Don't forget to show your creation and tell us about your feelings and ideas on social media with the hashtags :

#ivepattern & #blousetterose

Join us on:

Instagram



Facebook



Pinterest



The book :

L'Atelier couture de Blousette Rose

editor : www.creapassions.com

