



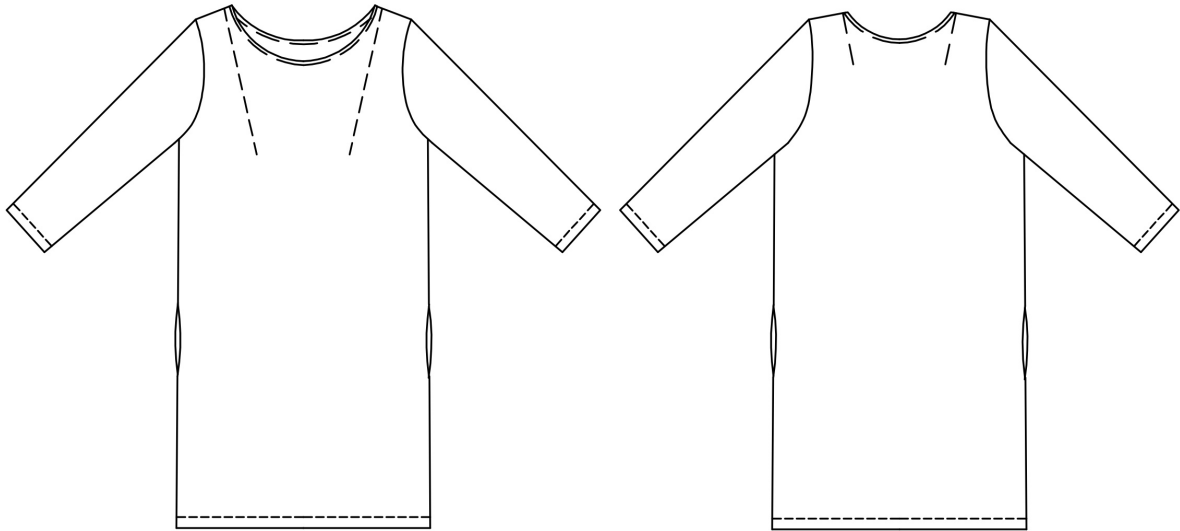
Iris - The Little Black Dress

* * *

sew along



design



Iris is a little black dress very easy to wear everyday.

Its simple cut could be accompanied by a nice necklace and heels to go out or perfect to go to work in with a short jacket and ankle boots.

- Straight cut slightly wider at chest than hips
- Short, mid-thigh length
- Sleeves 3/4
- Chest and Shoulder darts
- pockets



size chart

	1	2	3	4	5	6	7
stature	1,68m	1,68m	1,68m	1,68m	1,68m	1,68m	1,68m
bust	83cm	87cm	91cm	95cm	100cm	105cm	111cm
waist	63cm	67cm	71cm	75cm	80cm	85cm	91cm
full hips	90cm	94cm	98cm	102cm	107cm	112cm	118cm
upper arm width	26cm	27cm	28cm	29cm	30,25cm	31,5cm	33cm

* Measure the waist where the rib cage is hollow, on top of the navel.

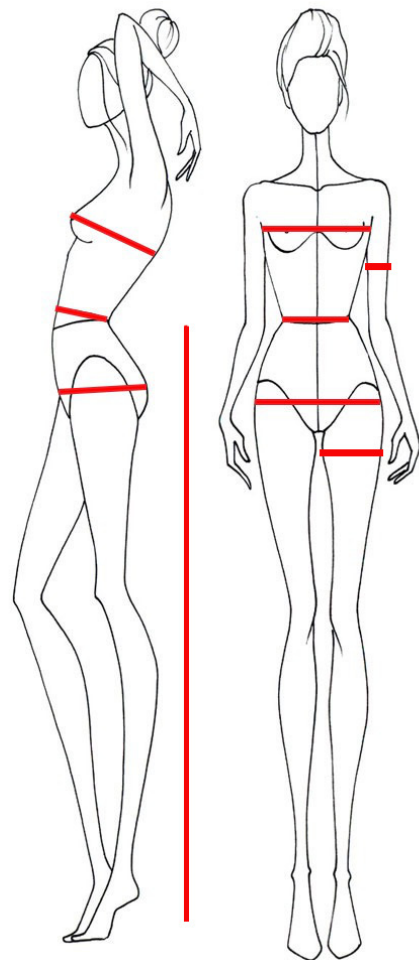
* Measure the full hips at the height of the buttocks.

* Measure the back from one armpit to the other.

* Measure the arm width at the height of the upper arm.

* Measure the legs from the waist down to the floor.

* Measure the thigh circumference 10cm underneath the crotch.





supplies

Fabric : soft and opaque : crepe, twill, * fine canvas, * synthetic fabric, satin, * fine milled wool, ...

* for beginners

	1	2	3	4	5	6	7
Fabric if width 1,40m	1,60m	1,65m	1,70m	1,70m	1,70m	1,70m	1,70m
Fabric if width 1,10m	2,60m	2,65m	2,70m	2,70m	2,70m	2,70m	2,70m
fusible interfacing	15cm x 90 cm	15cm x 90 cm	15cm x 90 cm	15cm x 90 cm	15cm x 90 cm	15cm x 90 cm	15cm x 90 cm
thread	*	*	*	*	*	*	*

caption & abbreviations

right/right : right sides together

right/wrg : right side on wrong side

wrg/wrg : wrong sides together

RIGHT SIDE OF THE FABRIC

WRONG SIDE OF THE FABRIC



cutting layouts

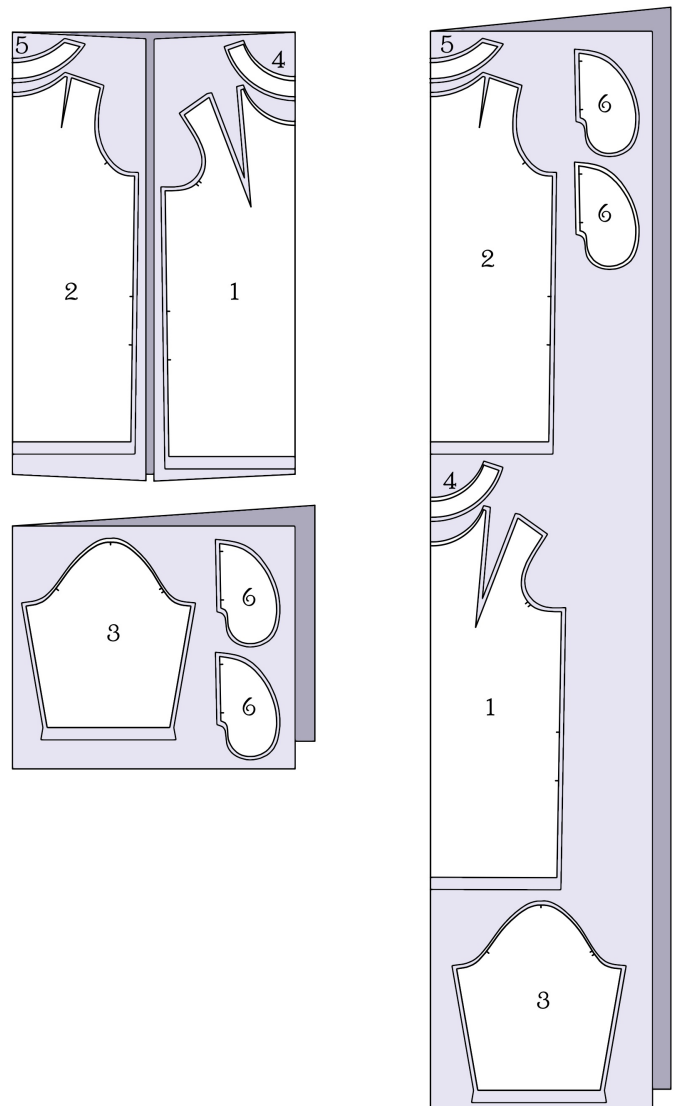
Advice: wash your fabric before cutting it to prevent it from shrinking once put together and washed for the first time. To do so, topstitch the edges of the cut fabric and put it in your washing machine set to the program adapted to the type of fabric. Once sewn, use the same washing program.

Seams allowances are not included in the pattern. For this model, add 3cm for hems (front, back, sleeve) and 1cm everywhere else.

FABRIC

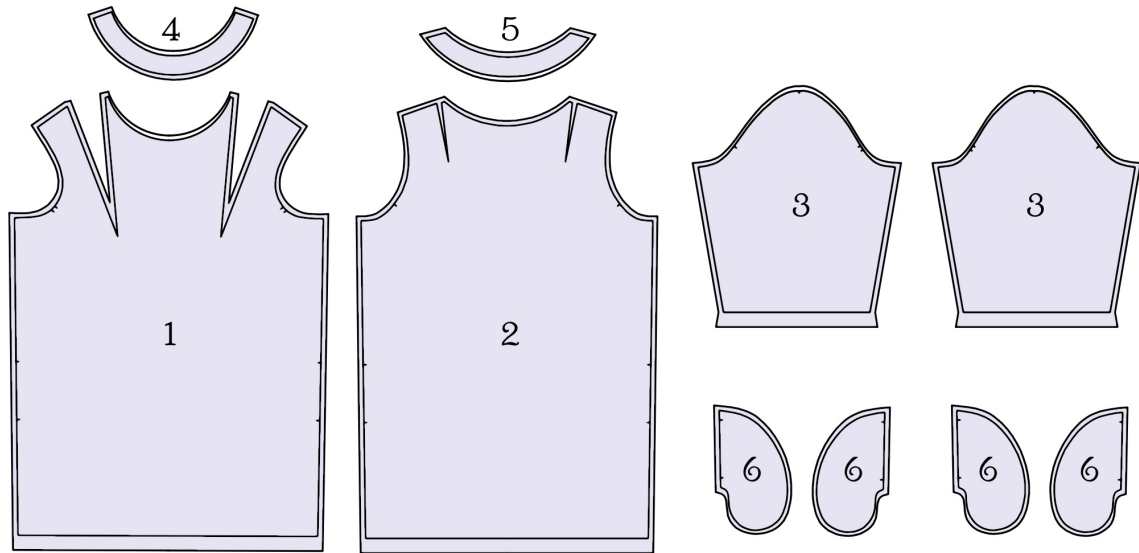
1. Front : cut 1 on fold
2. Back : cut 1 on fold
3. Sleeve : cut 2
4. Front facing: cut 1 on fold
5. Back facing : cut 1 on fold
6. Pocket : cut 4

pattern within size:



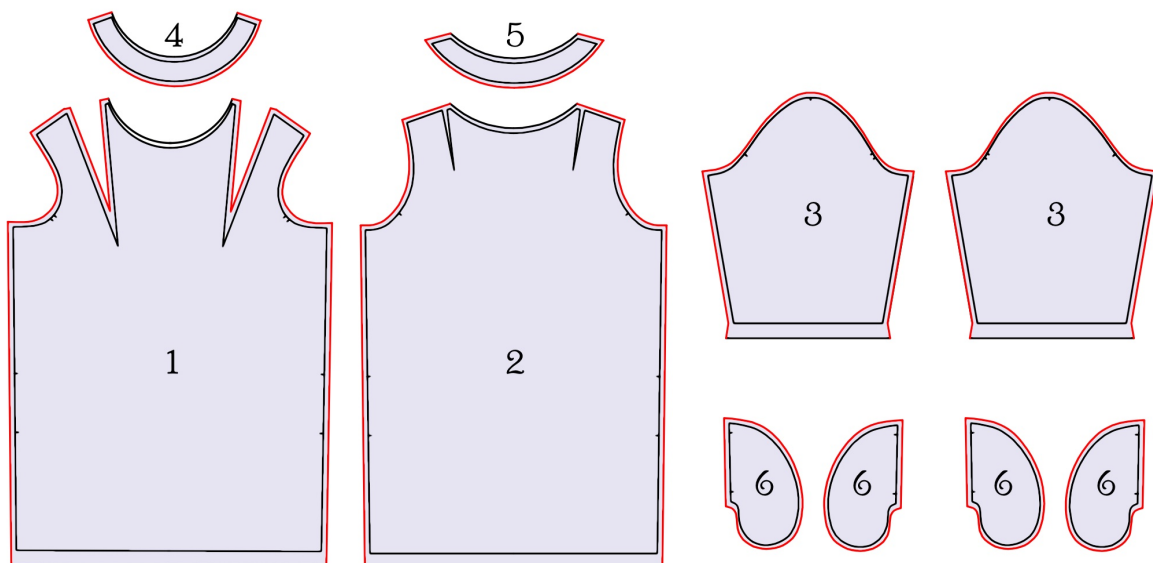


inventory



clean-finish edges

Clean-finish edges in red.





interfacing

Apply fusible interfacing to wrong side of these pieces.



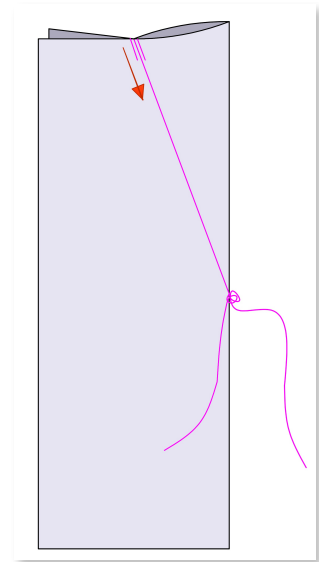
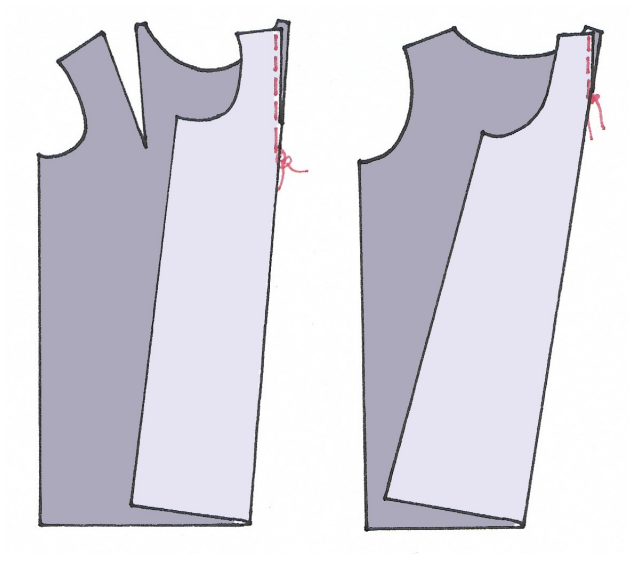
sew along

1. DARTS

- Realize the bust darts : fold front (1) along the middle of each bust dart with the right sides together.

Stitch darts from the large part to the point. At the end, continue to sew out of the fabric without making stop-points. Cut yarns leaving 8cm. Tie off yarns manually. Cut yarns at 5mm from the point. Press darts toward sides.

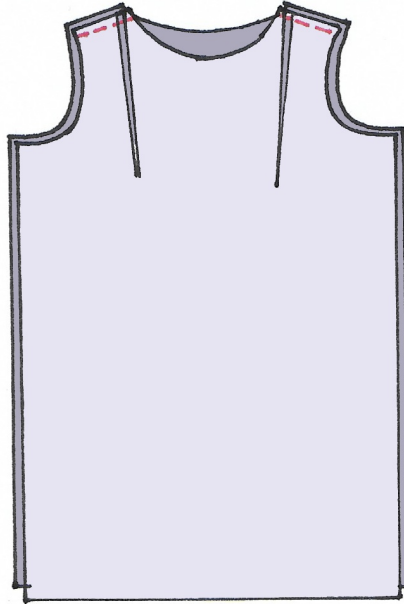
- Realize the shoulder darts of the back (2) the same way.





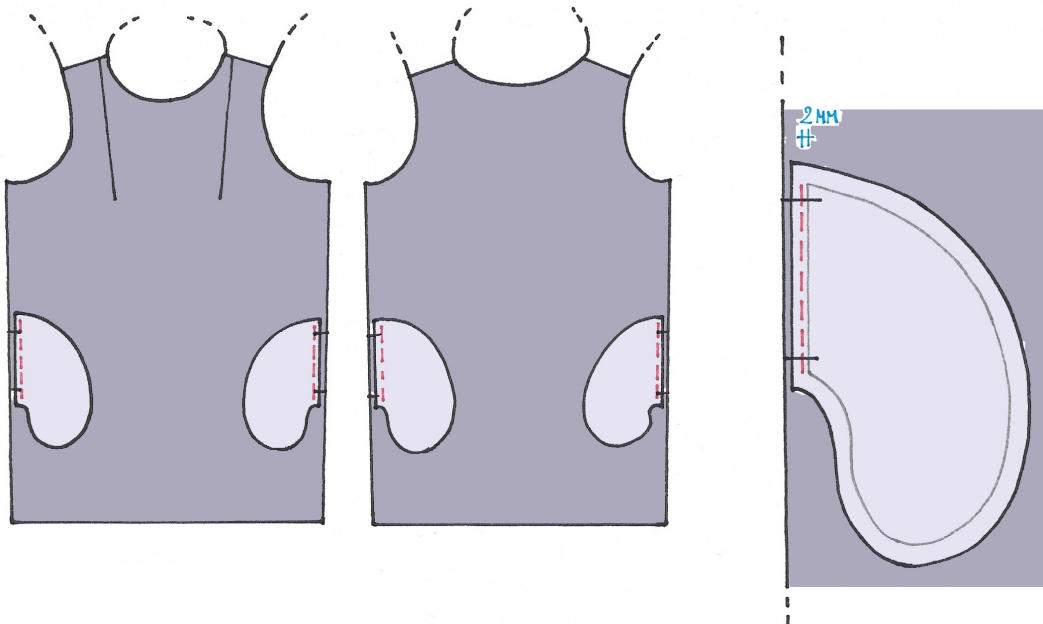
2. SHOULDERS

- With right sides together, pin the front (1) with the back (2). Stitch the shoulders. Press seams to open.



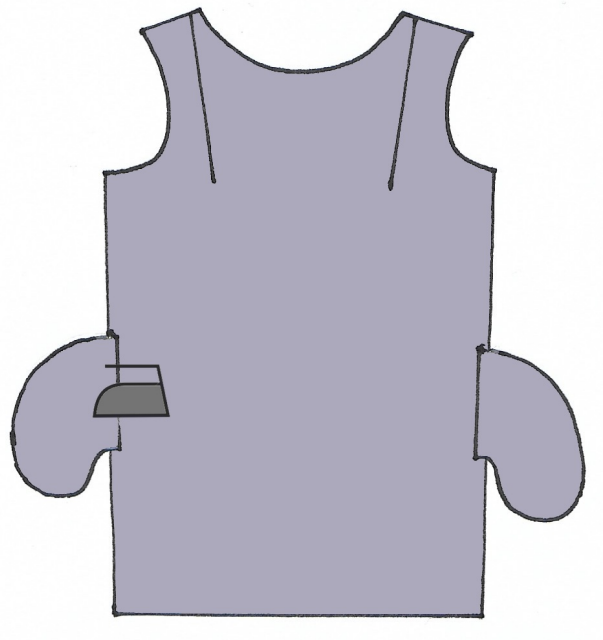
3. POCKETS AND SIDES

- With right sides together, pin the pockets (6) with the front (1) and the back (2) matching markings. Stitch from upper seam to under seam and in the seam allowance with a deviation of 2mm.

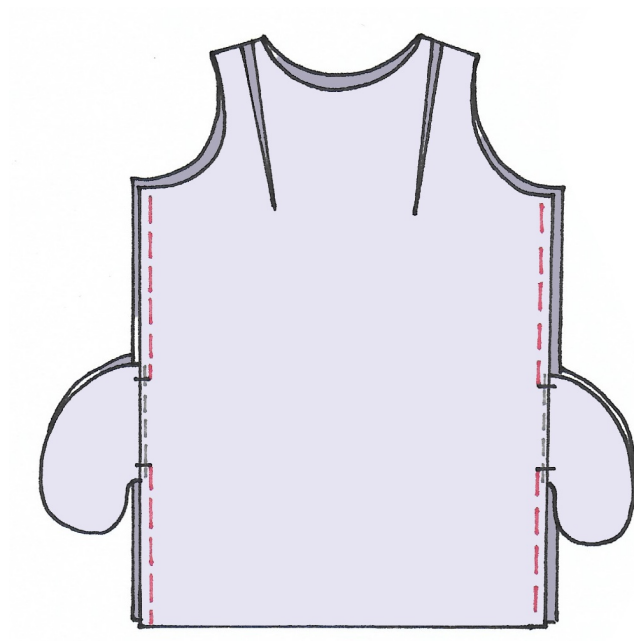




- Turn pockets to the side and press seams toward pockets.



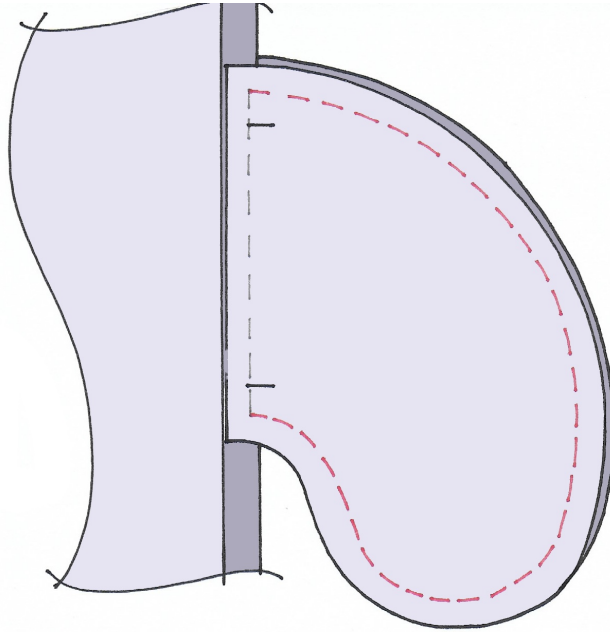
- With right sides together, pin the front (1) with the back (2). Stitch sides but interrupt the seam stitch between markings. Pockets are not included in this stitch.



- Press seams to open.

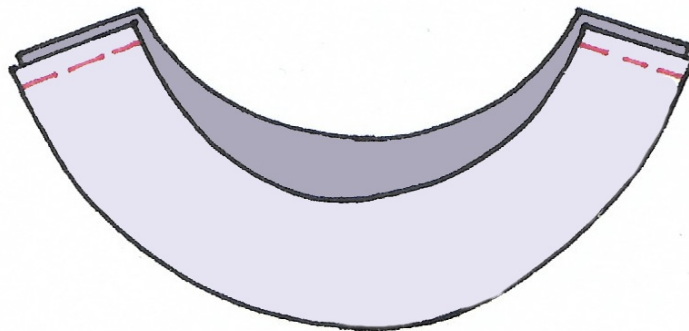


- With right sides together, pin pockets (6) in pairs. Remove the dress to work. Stitch the curve of the pockets.



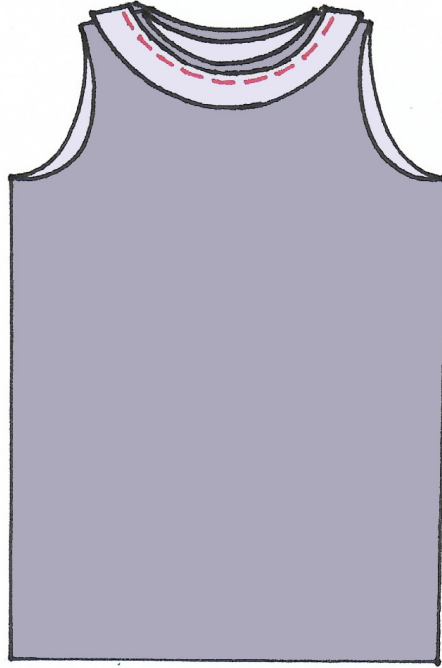
4. FACING

- With right sides together, pin the front facing (4) with the back facing (5). Stitch the shoulders. Press seams to open.

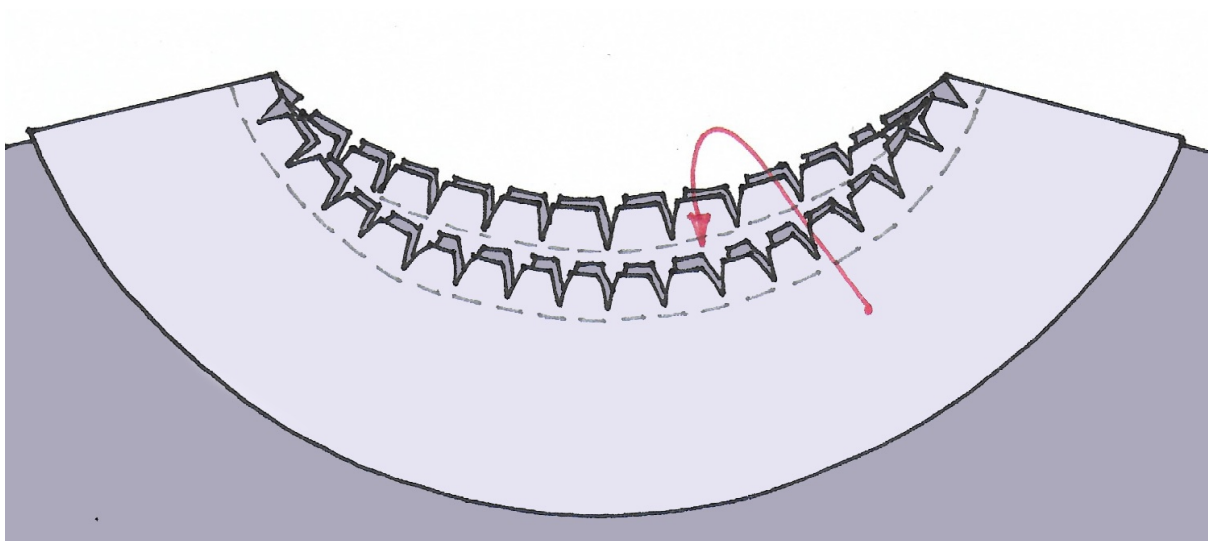


5. COLLAR

- With right sides together, pin the facing with the dress. Match the front of the facing with the front of the dress. Match the back of the facing with the back of the dress. Match the seams of the shoulders together. Stitch the neckline.



- Clip curves of the neckline.



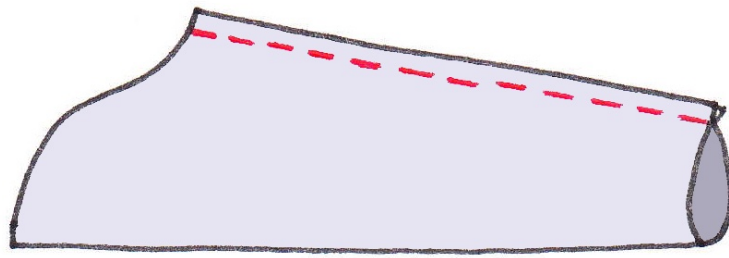
- Turn the facing on the wrong side of the dress. Press.



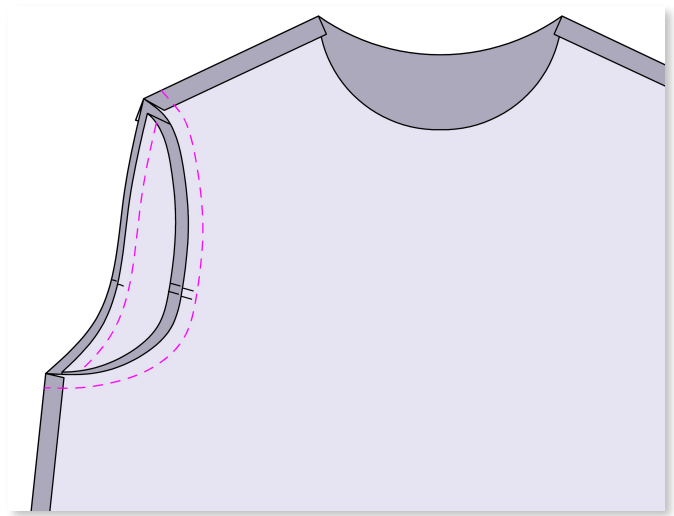
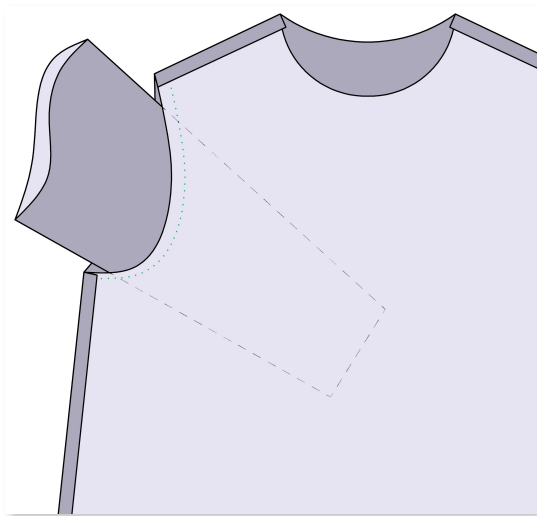
- Fix the facing on the seams shoulders of the dress manually.

6. SLEEVES

- Fold each sleeve (3) in two with right sides together. Stitch the side. Press seams to open.

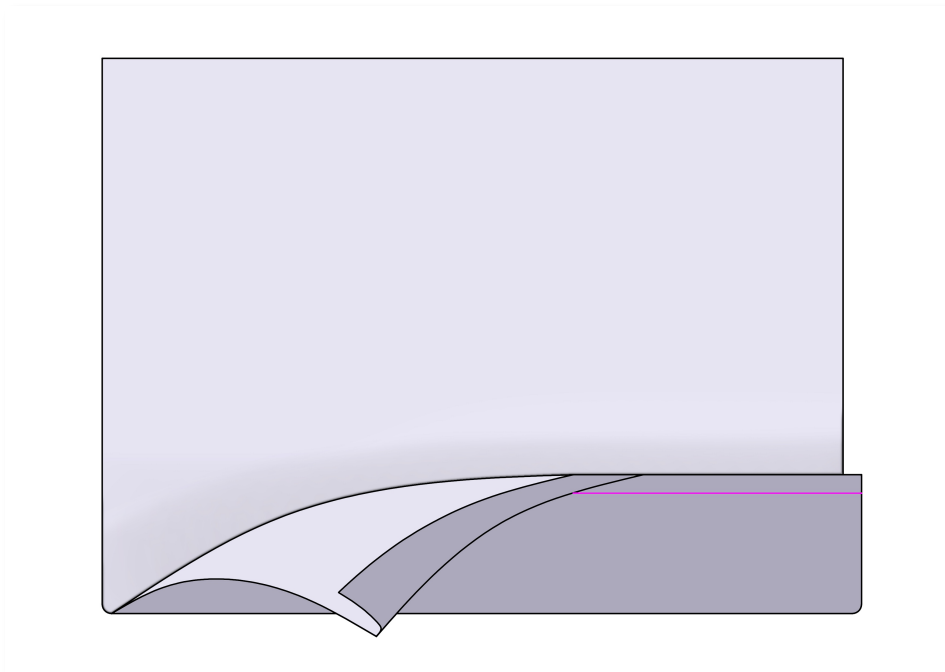
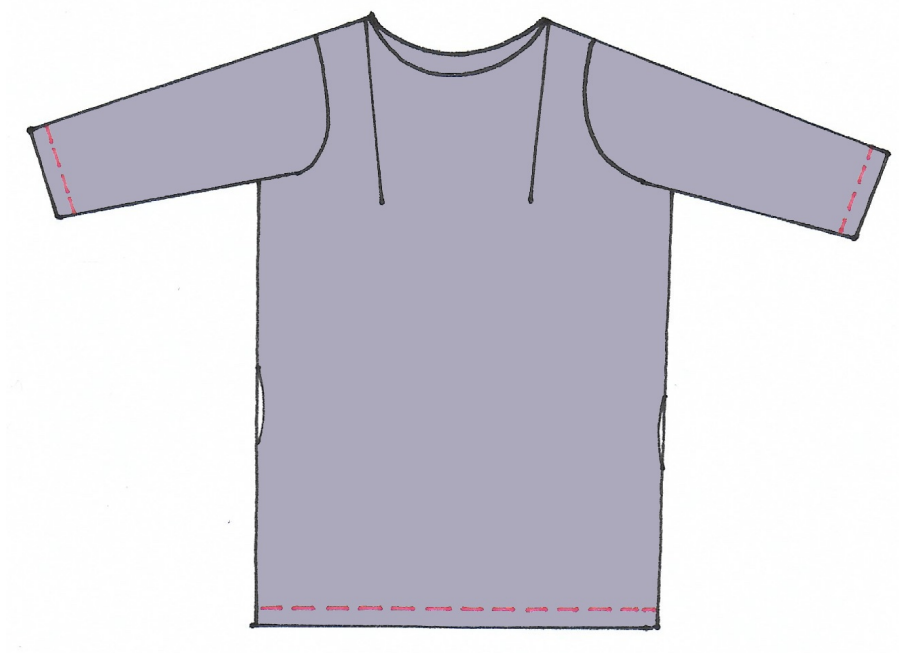


- Turn sleeves on the right side and turn the dress on the wrong side.
 - With right sides together, pin the armhole of sleeves with armholes of the dress.
- Match the markings. Stitch the armholes.



7. HEMS

- Create narrow hems : turn hem under 1cm, turn under 2cm. Stitch at 1,8cm of the fold.





Congratulations !

You have finished your sewing. Now you only have to wear it and be proud of yourself !

Don't forget to show your creation and tell us about your feelings on social media with the hashtags :

#irispattern & #blousetterose

Join us on:

Instagram



Facebook



Pinterest



The book :

L'Atelier couture de Blousette Rose

editor : www.creapassions.com



See you soon!