

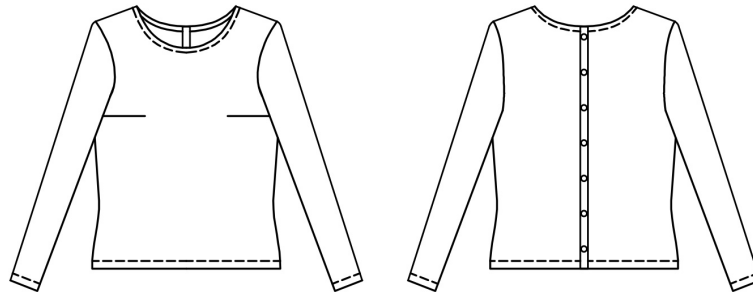
Capucine - Blouse Buttoned In The Back

* * *

sew along



design

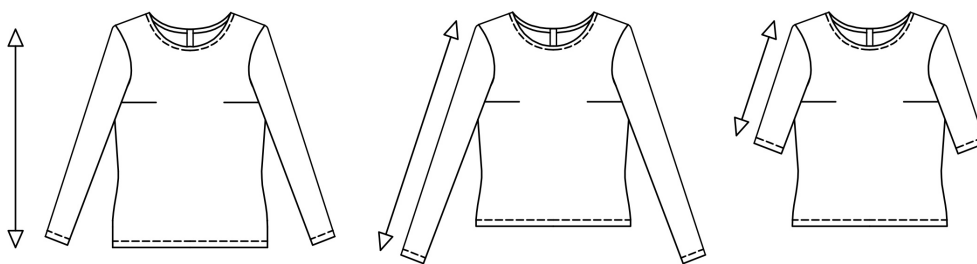


Capucine is a short blouse that is buttoned in the back. You can wear it on a daily basis. With its chameleon design, it will fit many occasions and the fabric will make the difference.

The cut must be straight and adjusted. The sleeves have a length of 7/8th. The collar is round and closed with an internal bias. The hem starts at the beginning of the hips. The shoulders are adjusted.

The pattern displays:

- the length of the basic bust and a second proposal for a longer bust.
- the length for the sleeves 7/8th and other proposals for longer or shorter (above the elbow) sleeves.



You can sew this design in two different ways, which vary from a difficulty perspective:

A *BASIC* sew along for beginners who can get acquainted with the sew along.

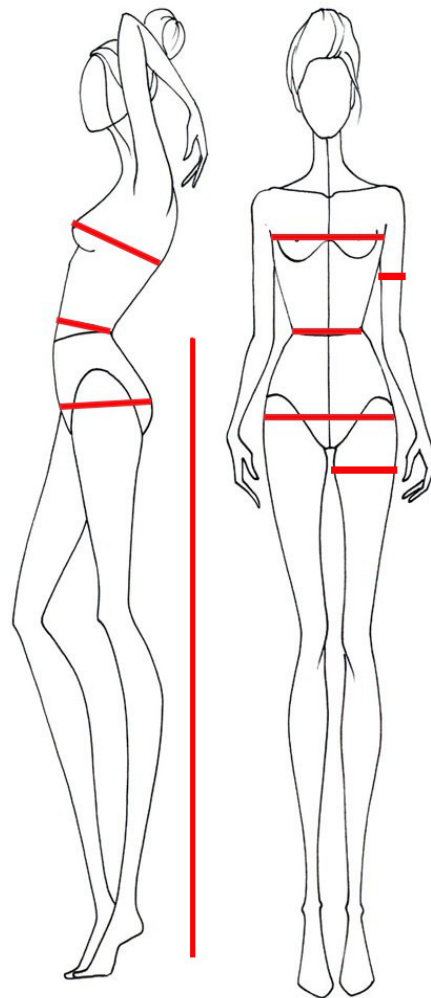
A *FINISHING+* sew along for advanced students which is recommended for openwork or transparent fabrics. The sew along contains the French seam technique. Beginners can give it a try once they have sewn one or two blouses according to the basic technique.



size chart

	1	2	3	4	5	6	7
stature	1.68m	1.68m	1.68m	1.68m	1.68m	1.68m	1.68m
bust	83cm	87cm	91cm	95cm	100cm	105cm	111cm
back	34cm	35cm	36cm	37cm	38.25cm	39.5cm	41cm
waist	63cm	67cm	71cm	75cm	80cm	85cm	91cm
full hips	90cm	94cm	98cm	102cm	107cm	112cm	118cm
arm length	61.5cm	62cm	62.5cm	63cm	63.6cm	64.2cm	64.9cm
arm width	26cm	27cm	28cm	29cm	30.25cm	31.5cm	33cm

- * Measure the bust at breast level and parallel to the ground.
- * Measure the waist where the rib cage is hollow, on top of the navel.
- * Measure the full hips at the height of the buttocks.
- * Measure the back from one armpit to the other.
- * Measure the arm width at the height of the upper arm.
- * Measure the arm length from the shoulder joint to the wrist.





supplies

Type of fabric: many types of fabric can be used to sew Capucine in different styles. Since the cut is adjusted, we do not recommend thick fabrics. All thin fabrics can be used. For example: veil, cambric, embroidery, lace, crepe, muslin, thin cotton or linen or viscose or synthetical canvas, satin, thin twill, jersey...

*** For the long bust and long sleeves version, add 10cm of fabric.

	1	2	3	4	5	6	7
fabric if width 1.40m ***	1.40m	1.40m	1.40m	1.40m	1.40m	1.40m	1.40m
fabric if width 1.10m ***	1.75m	1.85m	1.90m	2m	2m	2m	2m
bias 20mm	60cm	60cm	65cm	65cm	65cm	70cm	70cm
12mm diameter button	7	7	7	7	7	7	7
thread	*	*	*	*	*	*	*

caption & abbreviations

right/right: right sides together

right/wrg: right side on wrong side

wrg/wrg : wrong sides together

RIGHT SIDE OF THE FABRIC

WRONG SIDE OF THE FABRIC

RIGHT SIDE OF THE BIAS

WRONG SIDE OF THE BIAS



cutting layouts

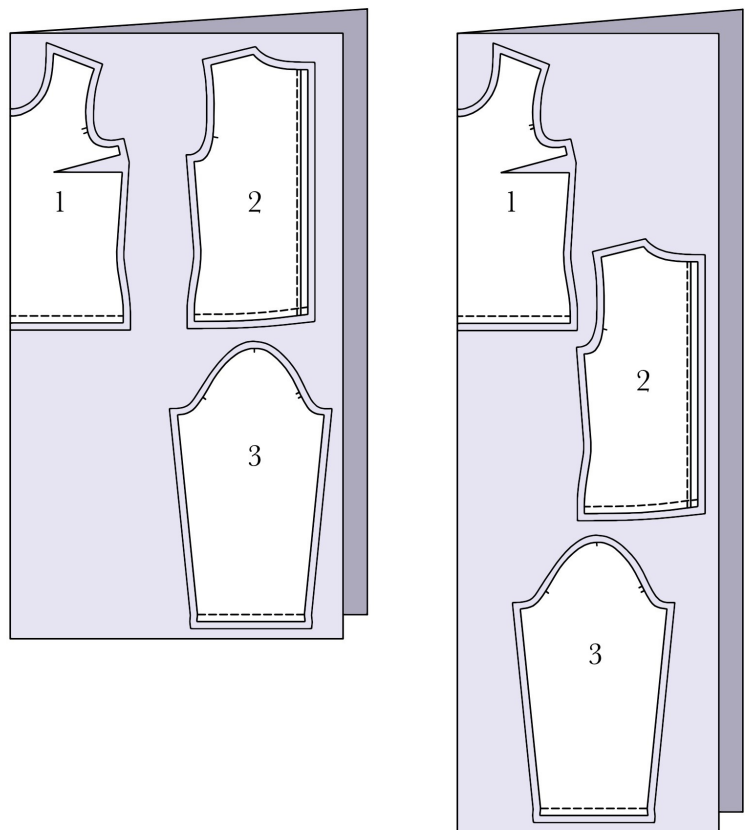
Advice: wash your fabric before cutting it to prevent it from shrinking once put together and washed for the first time. To do so, topstitch the edges of the cut fabric and put it in your washing machine set to the program adapted to the type of fabric. Once sewn, use the same washing program.

Seam allowances are not included in the pattern. For this model, add 1.5 cm everywhere.

CUTTING THE FABRIC

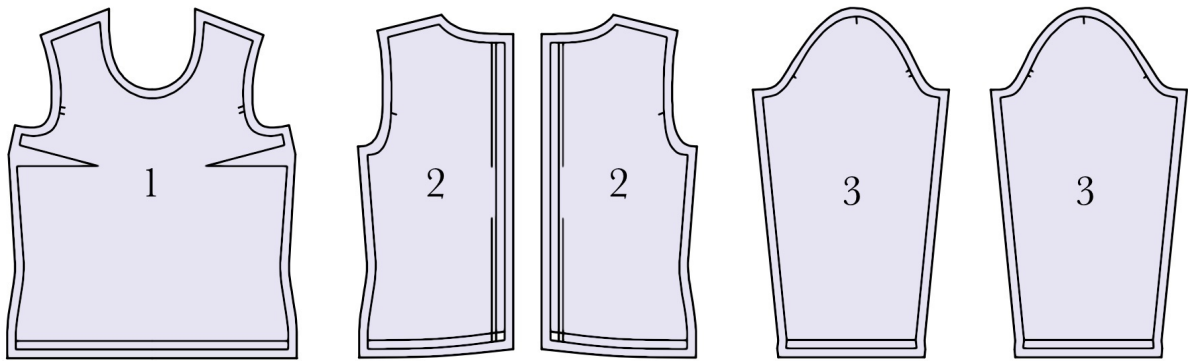
1. Front: cut 1 on fold
2. Back: cut 2
3. Sleeve: cut 2

Pattern according to width and siz





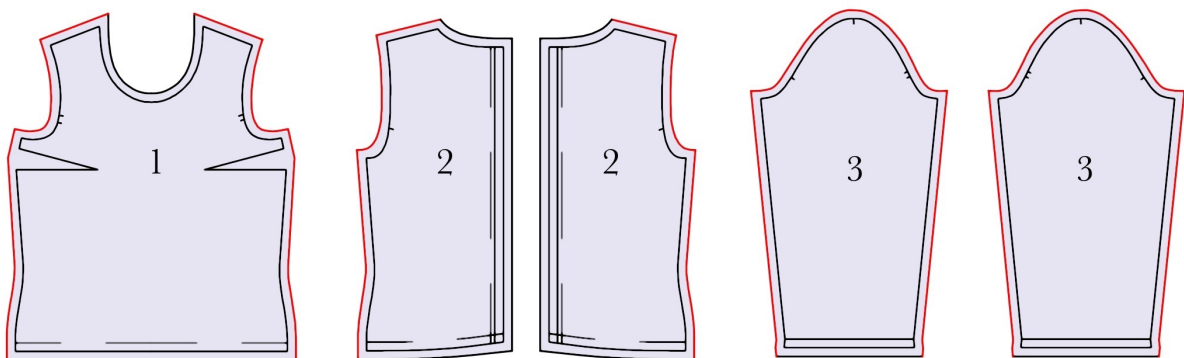
inventory



clean-finish edges

For the *SIMPLE* version: topstitch (make a zigzag stitch) the edges of the parts identified in red on the sketch.

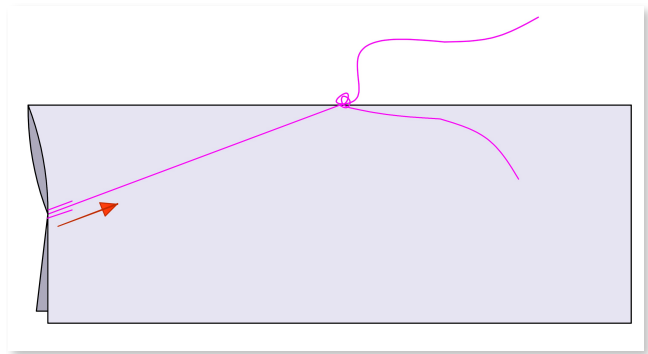
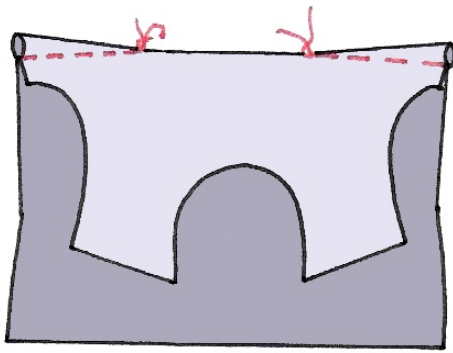
For the *FINISHING* + version: no need to clean-finish the edges.



sew along

1. BUST DARTS *SIMPLE*

- Make the bust darts: fold the front (1) in the middle of each dart right/right. Stitch the darts from the widest part towards the tip. At the end of the dart stitch, extract fabric without making a stop stitch. Cut the threads at 8cm from the tip. Knot the threads manually. Cut again at 5mm from the knot. Press the darts towards the bottom.



1. BUST DARTS FINISHING +

- Would you like to test haute couture darts? Then proceed as follows. (Check the blog to view [the complete picture tutorial](#).)
- Remove the superior thread from the machine and keep only the inferior thread from the bobbin.
- Pull the bobbin thread to obtain more or less 50cm.
- This thread will follow the track of the superior thread in reverse: make it run through the window of the foot. Make it run through the eye of the needle, through the back and towards the front. Make the thread run through the thread guide on top of the needle. Turn around the thread reliever. Bring the thread upwards to make it run through the thread tension. Finish with the usual spool holder.
- Put the tip of the dart against the thread coming out of the plate underneath the foot.



- Bring the needle down manually (with the wheel) to pin it at the tip of the dart.

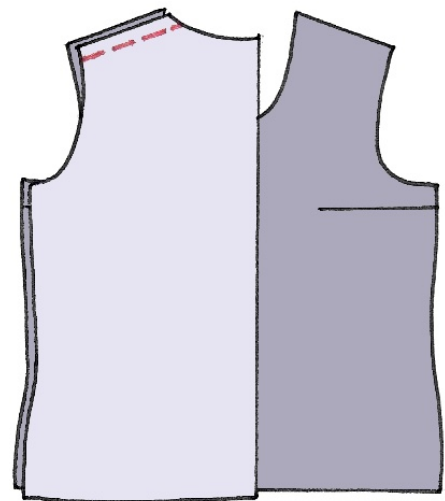
Lower the foot.

- Stitch the dart with the usual stop stitch at the end.
- Use a single thread to sew the dart. No need to make a knot at the tip, and you won't have any creases.

2. SHOULDERS *SIMPLE*

- Pin the front (1) with the backs (2) right/right.

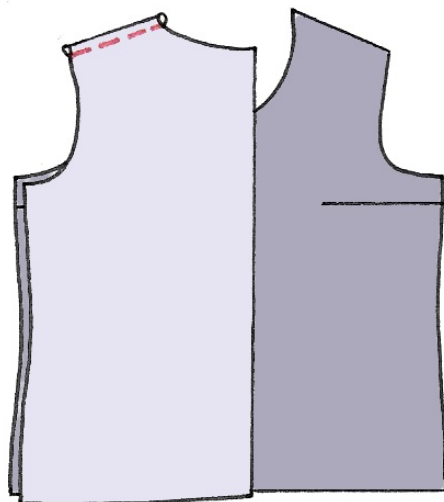
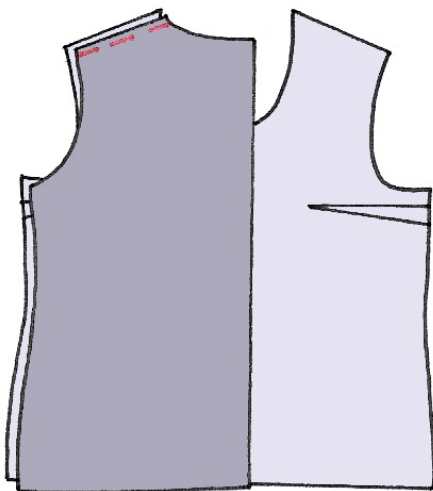
Stitch the shoulders. Press seams to open.



2. SHOULDERS *FINISHING+*

Follow the tutorial on the French seam technique.

- Pin the front (1) with the backs (2) wrg/wrg. Stitch the shoulders at 1/2 inch (i.e.: 0.75cm). Cut the seam allowances at 4mm from the seam.
- Press in two steps: open the seams then fold the parts right/right to wrap up the seam allowances.
- Stitch the shoulders at 1/2 inch (i.e.: 0.75cm). Press the allowances towards the back.

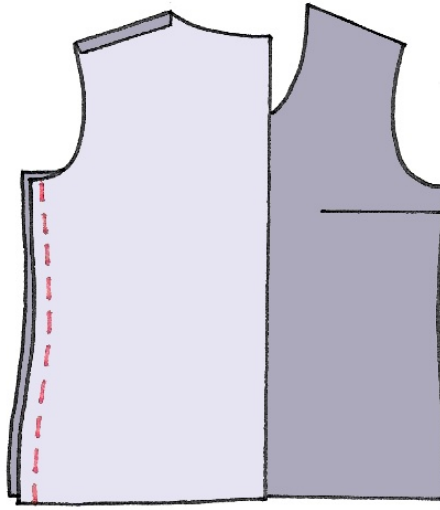




3. SIDES SIMPLE

(For more clarity, only one back is represented on the sketch.)

- Pin the front (1) with the backs (2) right/right. Stitch the sides. Press seams to open.

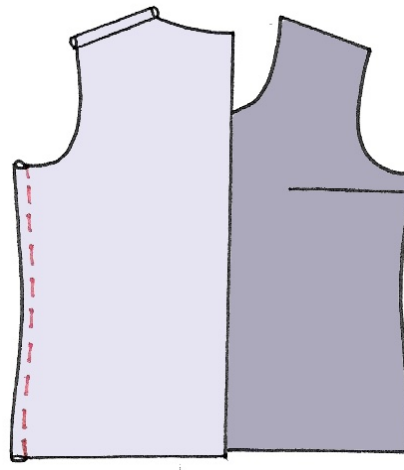
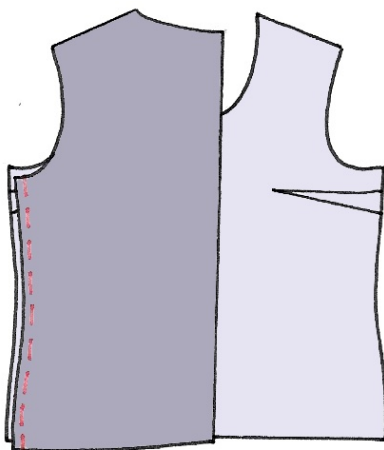


3. SIDES FINISING +

Follow the tutorial on the French seam technique.

(For more clarity, only one back is represented on the sketch.)

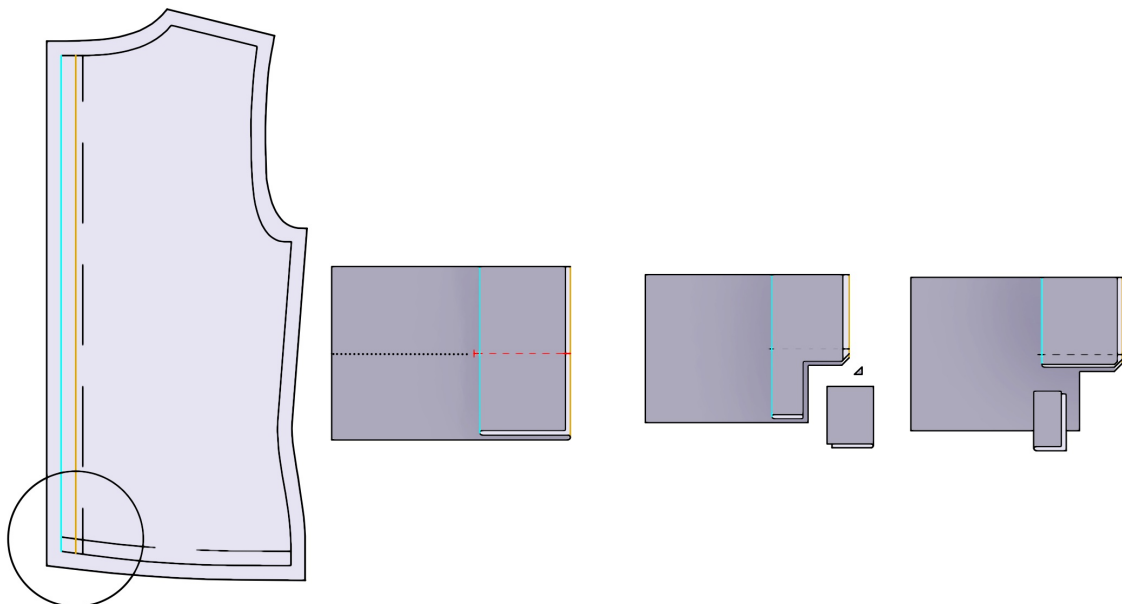
- Pin the front (1) with the backs (2) wrg/wrg. Stitch the sides at 1/2 inch (i.e.: 0.75cm). Cut the seam allowances at 4mm from the seam.
- Press in two steps: open the seams then fold the parts right/right to wrap up the seam allowances.
- Stitch the sides at 1/2 inch (i.e.: 0.75cm). Press the allowances towards the back.



4. INFERIOR ANGLE HEM

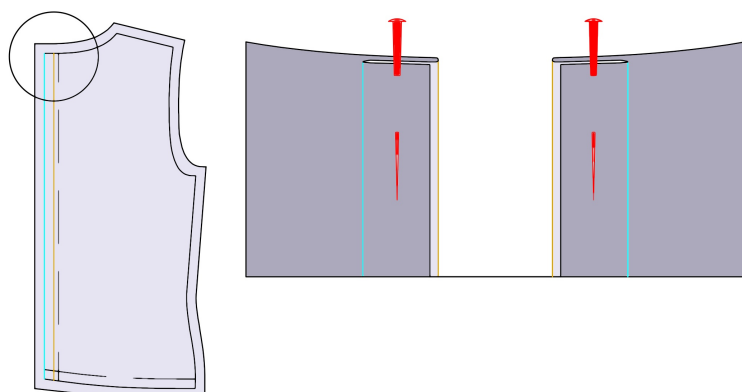
- At the bottom of the backs (2), fold the button strip on the “A” line (in yellow on the sketch) **right/right**. Then fold the fabric **wrg/wrg** on the “B” line (in blue on the sketch). The pleats have the shape of an accordion.

- Stitch those pleats on the hem line (thus at 3cm from the cut edge of the fabric).
- Clip in 3 steps as illustrated on the sketches: one rectangle, then the angle, then the remaining strip.



5. SUPERIOR ANGLE HEM

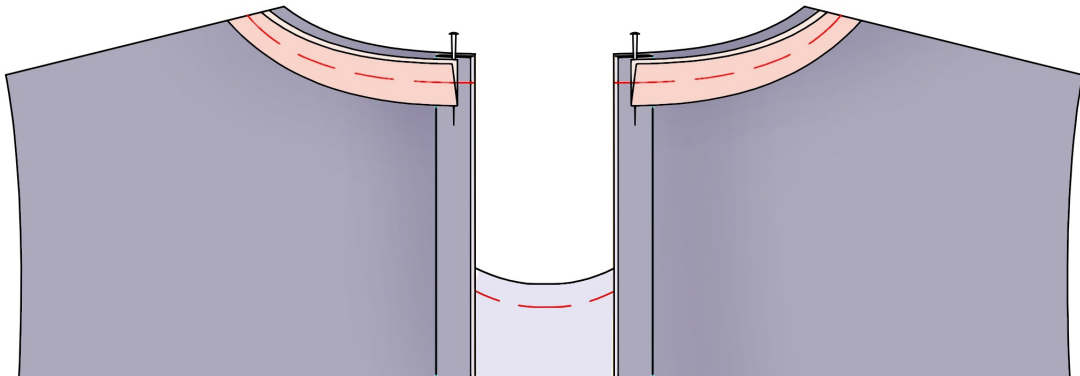
- Unfold the bias. Fold it in two wrg/wrg. Press the bias folded as such.
- At the top of the backs, fold the button strip on the “A” line (in yellow on the sketch) right/right.
- Bring the cut edge of the fabric against the pleat made previously to fold the fabric wrg/wrg on the “B” line (in blue).
- Pin together.



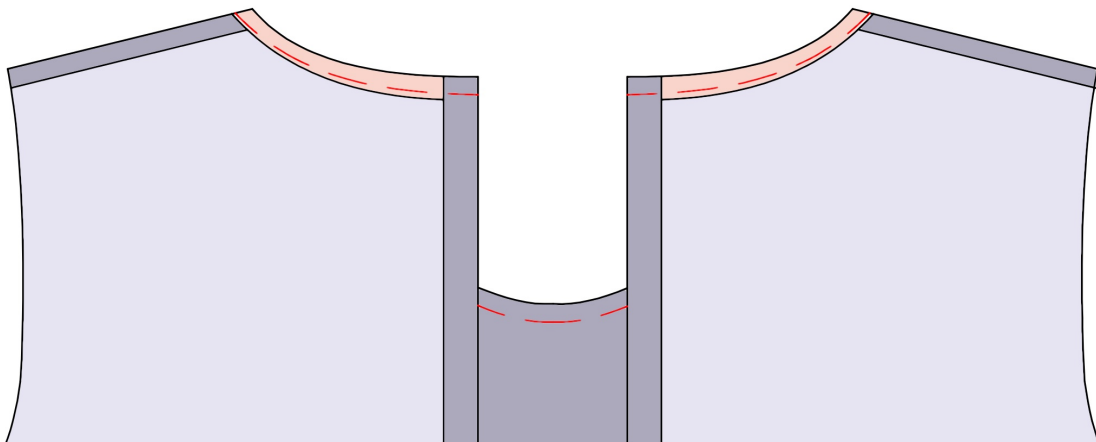


6. COLLAR

- Put the bias along the neckline against the right side of the work with the open side of the bias towards the seam allowances of the collar. The ends of the bias must outstrip the button strip.



- Clip the superior angles and the curve of the collar.
- Fold the bias on the wrong side of the work. In the superior angles, turn the button strip on the right side. The ends of the bias are underneath the button strip. Press carefully.
- Topstitch the bias at 2mm from the inferior pleat of the bias.

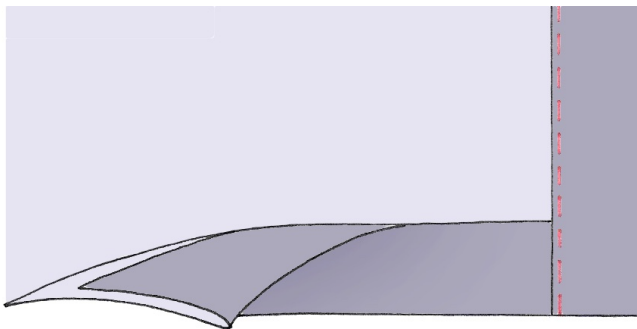


7. BUTTON STRIP

- Turn the button strip on the right side of the backs.
- Fold 1.5 cm of fabric wrg/wrg twice all along the button strip.

At the bottom, prepare the hem underneath the button strip that is folded 2 x by 1.5cm wrg/wrg too (it's a double hem).

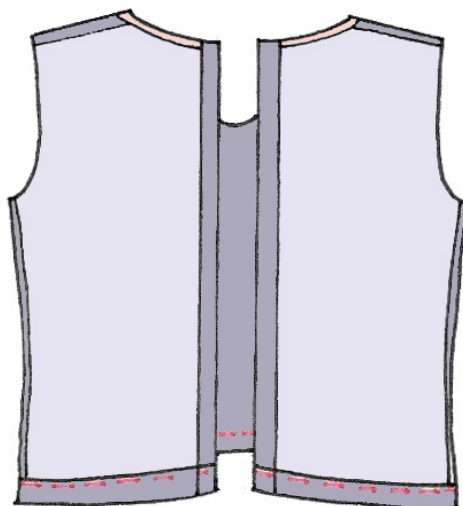
- Topstitch the button strip at 2mm from the internal pleat.



8. HEM

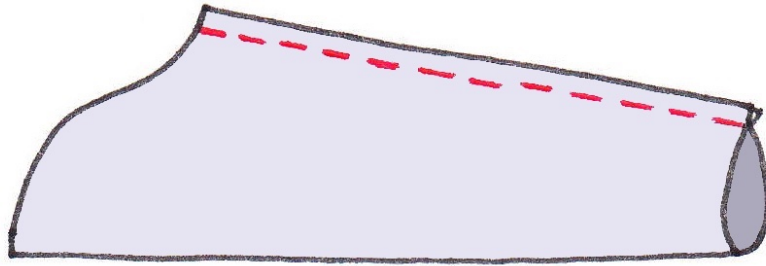
- Fold 1.5cm wrg/wrg twice to shape the hem (already prepared with the button strips).

Topstitch the hem at 2mm from the superior pleat.

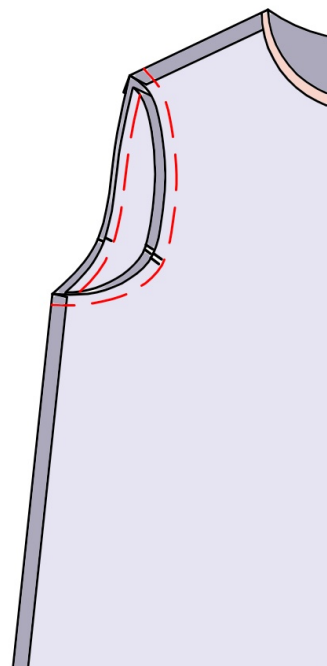
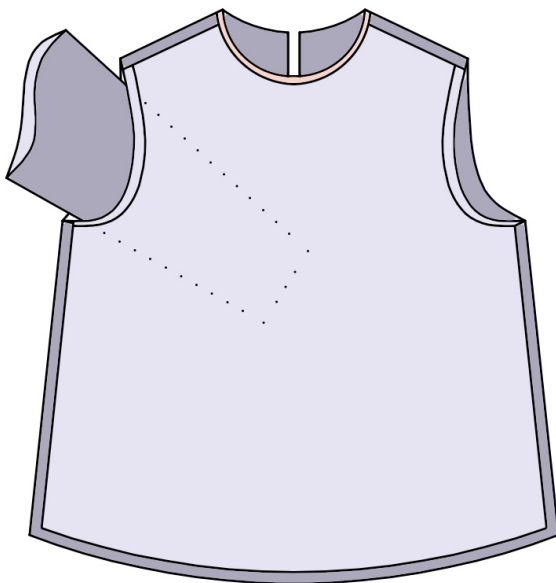


9. SLEEVES *SIMPLE*

- Fold each sleeve (3) right/right. Stitch the side. Press seams to open.



- Turn the sleeves on the right side and turn the blouse on the wrong side.
- Pin the armholes of the sleeves with the armholes of the blouse right/right with the sleeves inside the blouse. The mark at the top of the sleeves must match the shoulder seam of the blouse. The front of the blouse must match the front of the sleeves (2 marks). The seam of the side of the sleeves matches the seam of the sides of the blouse. The back of the sleeves matches the back of the blouse (one mark).
- Stitch the armholes.





9. SLEEVES *FINISHING*+

Follow the tutorial on the French seam technique.

- Fold each sleeve (3) wrg/wrg. Stitch the sides at 1/2 inch (i.e.: 0.75cm). Cut the seam allowances at 4mm from the seam.

- Press in two steps: open the seams then fold the parts rght/rght to wrap up the seam allowances.

- Stitch the sides at 1/2 inch (i.e.: 0.75cm). Press the allowances towards the back.

- Turn sleeves on the wrong side and turn the blouse on the right side.

- Pin the armholes of the sleeves with the armholes of the blouse wrg/wrg with the sleeves inside the blouse. The mark at the top of the sleeves must match with the shoulder seam of the blouse. The front of the blouse must match with the front of the sleeves. The seam of the side of the sleeves matches with the seam of the sides of the blouse.

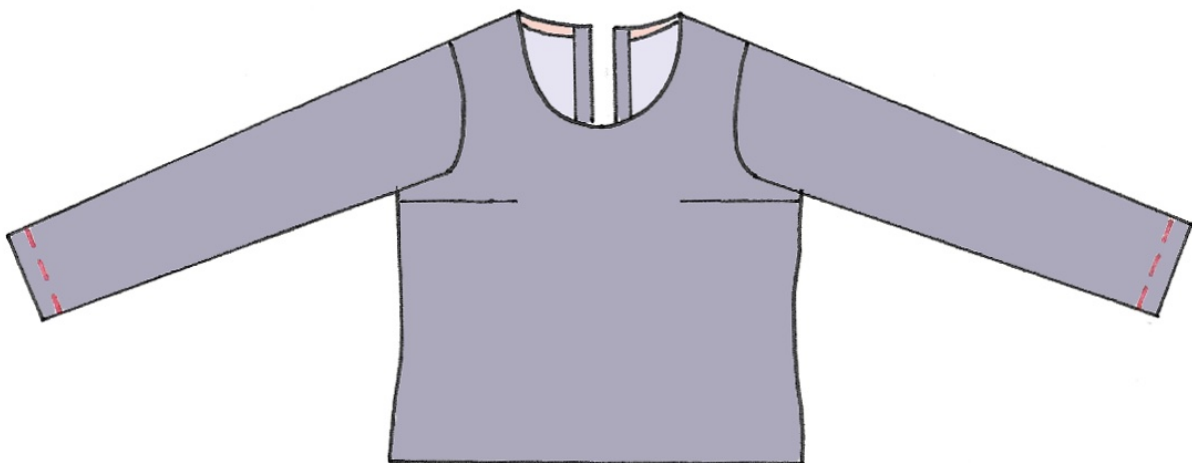
- Stitch the armholes at 1/2 inch (i.e.: 0.75cm). Cut the seam allowances at 4mm from the seam.

- Fold the parts rght/rght to wrap up the seam allowances.

- Stitch the armholes at 1/2 inch (i.e.: 0.75cm). Press the allowances towards the back.

10. SLEEVE HEM

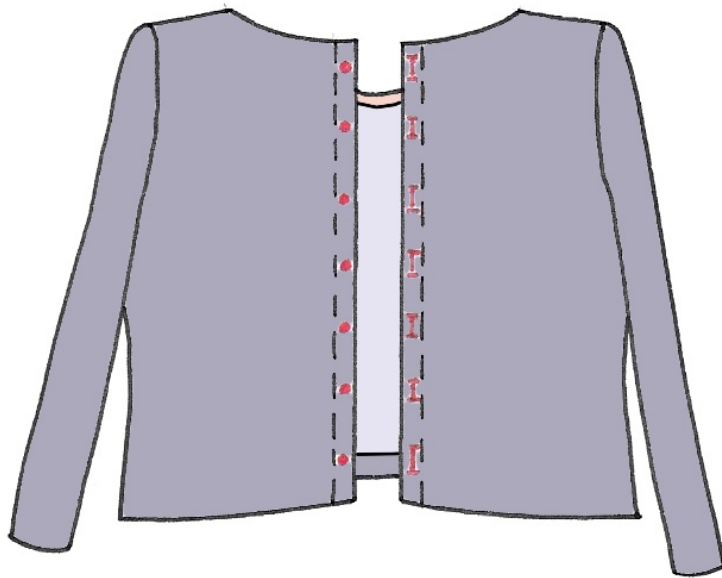
- Make the hem of the sleeves identical to the hem of the blouse: fold 1.5cm wrg/wrg twice. Stitch the hem at 2mm from the superior fold.





11. BUTTONHOLES

- On the button strip of the right side of the back (when worn), make vertical buttonholes according to your buttons. Place the 1st buttonhole according to the mark and position the 6 other buttonholes more or less every 7 cm.
- On the button strip of the left side of the back, sew the buttons and make them correspond to the buttonholes.





Congratulations !

You have finished your sewing. Now you only have to wear it or give it to someone. And don't forget to mention that you made it yourself!

Don't forget to show your creation and tell us about your feelings and ideas on social media with the hashtags:

#capucinepattern & #blousetterose

Join us on:

Instagram



Facebook



Pinterest



The book:

L'Atelier couture de Blousette Rose

editor: www.creapassions.com



See you soon!